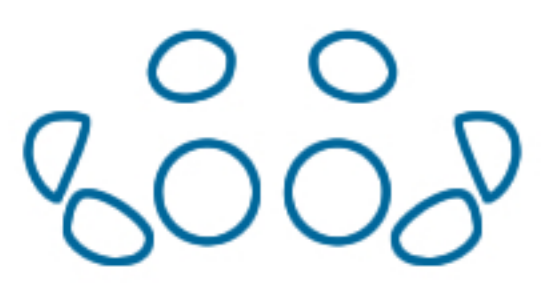
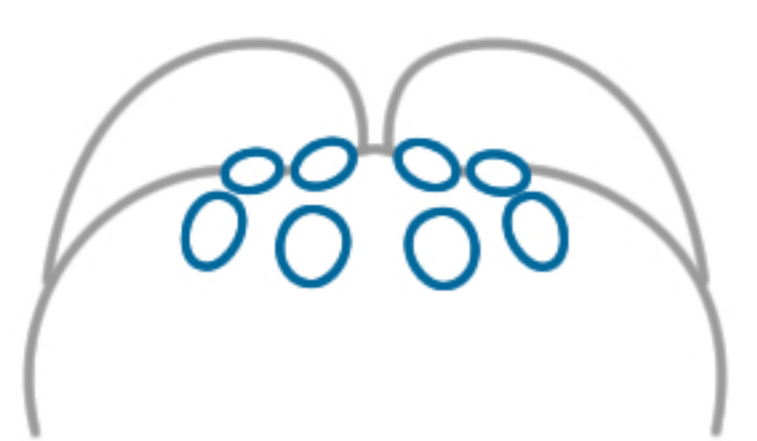


EYE PATTERNS OF SOME AUSTRALIAN ARANEOMORPHS

Robert Whyte
rob@toadshow.com.au



Tegenaria
AGELENIDAE



Dardurus spinipes
AMAUROBIIDAE



Daviesa lubinae
AMAUROBIIDAE

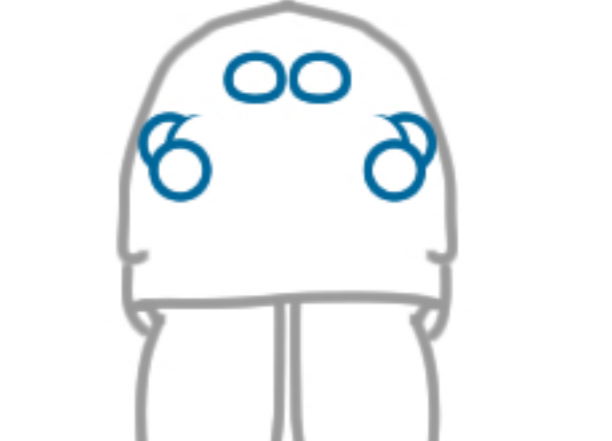


*Rastellus africanus**
AMMOXENIDAE

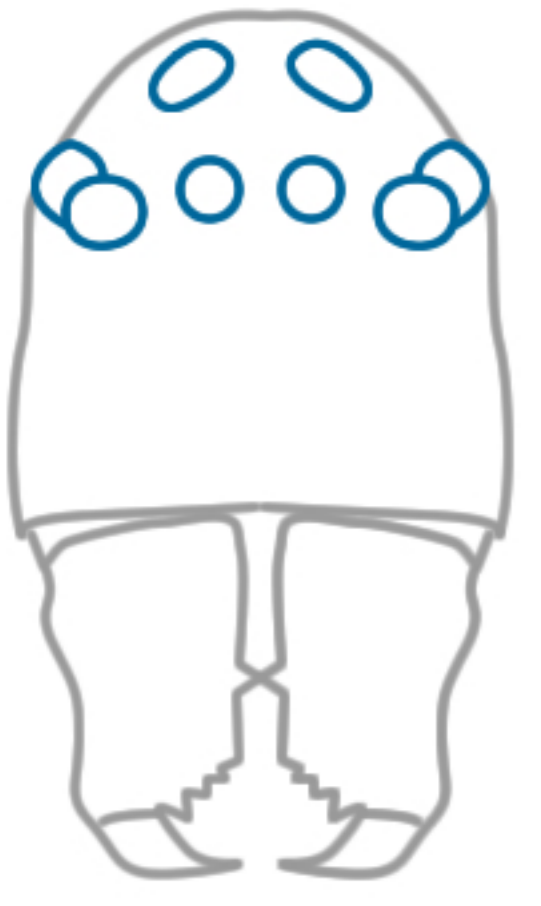


Teeatta driesseni

Tanganoides greeni
AMPHINECTIDAE



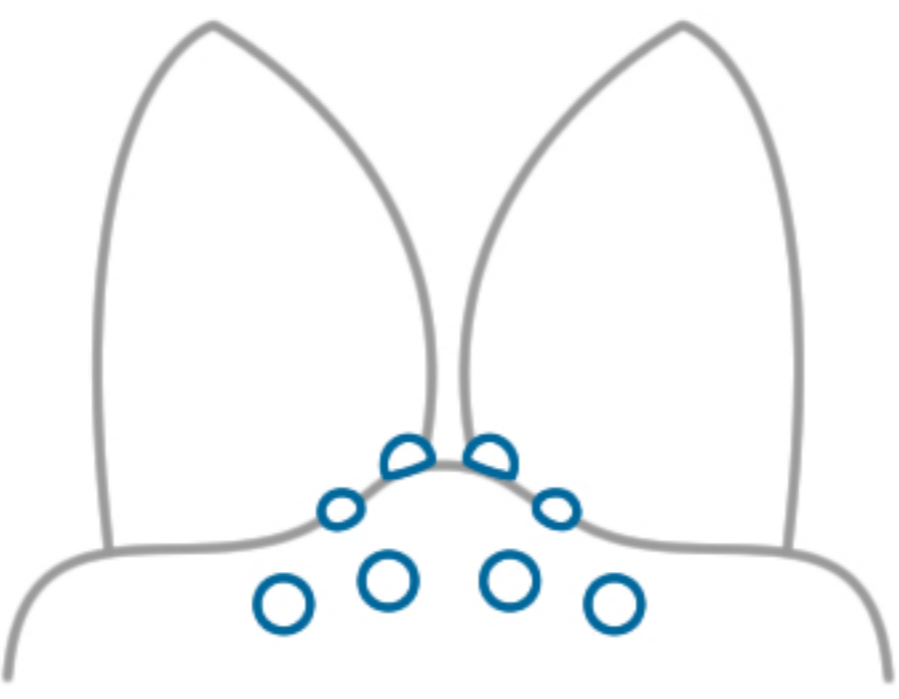
'*Chasmocephalon*' sp.
ANAPIDAE



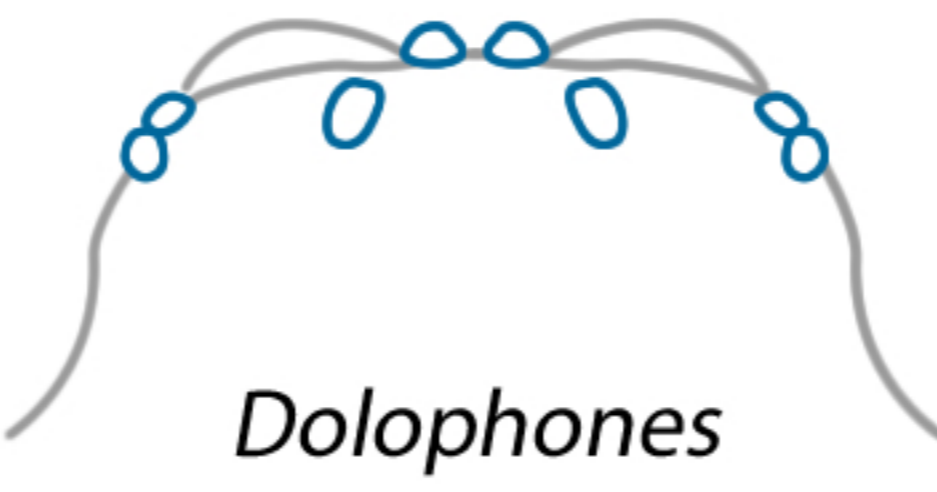
Risdonius parvus
ANAPIDAE



Victanapis
ANAPIDAE



Amaurobioides litoralis
ANYPHAENIDAE



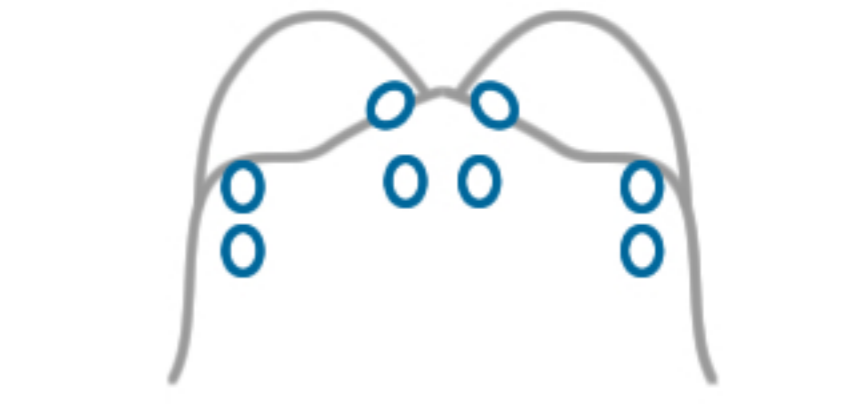
Dolophones



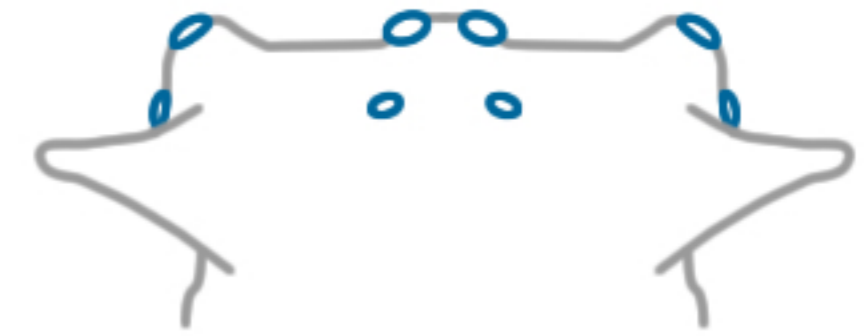
Anepsion
ARANEIDAE



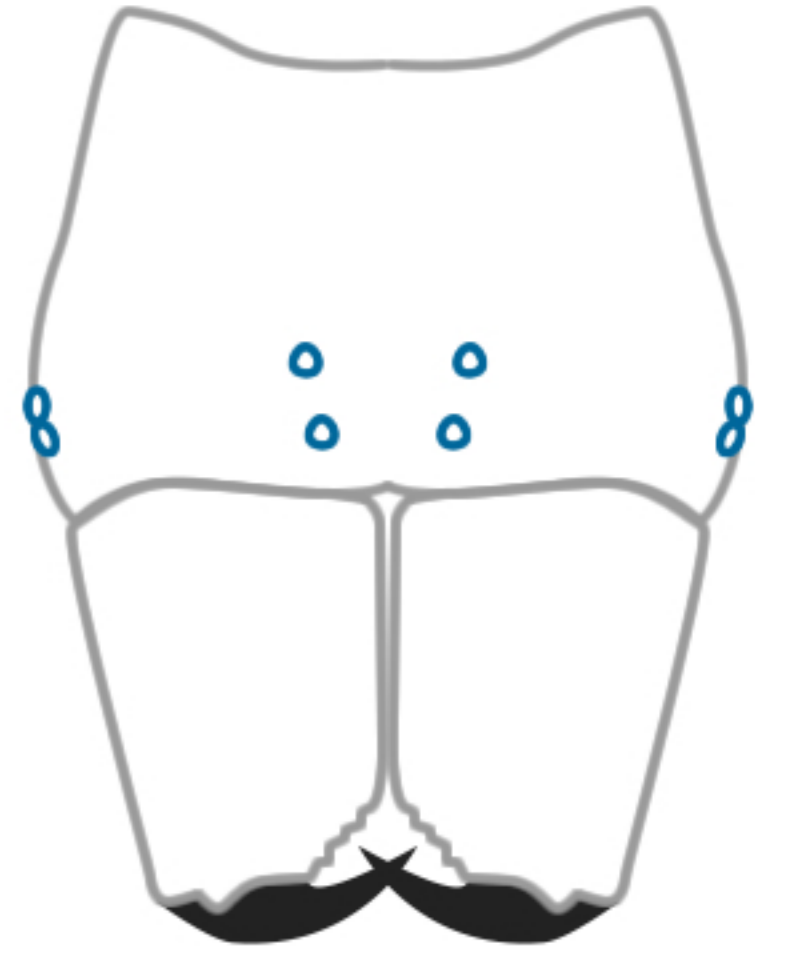
'*Araneus*'
ARANEIDAE



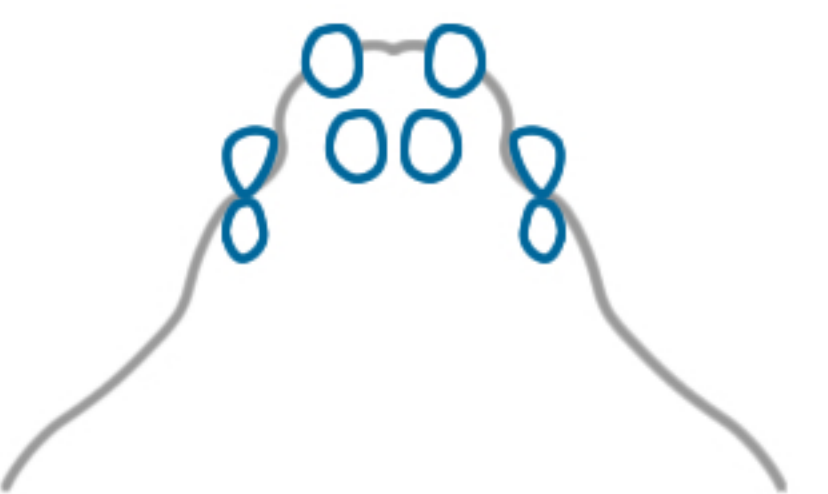
Neoscona theisi



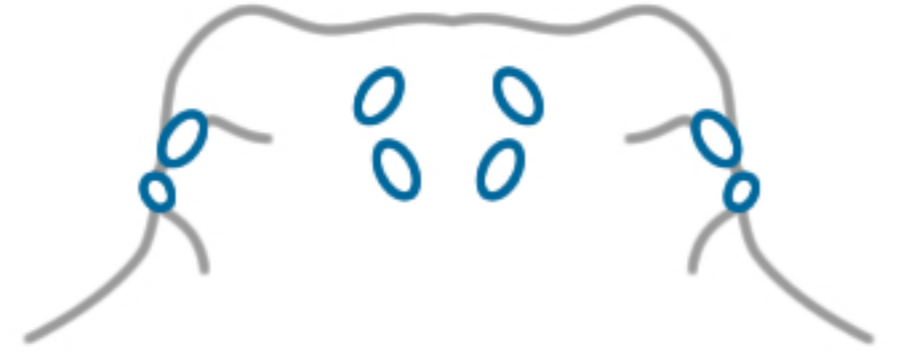
Arkys cornutus
ARANEIDAE



Carepalxis
ARANEIDAE



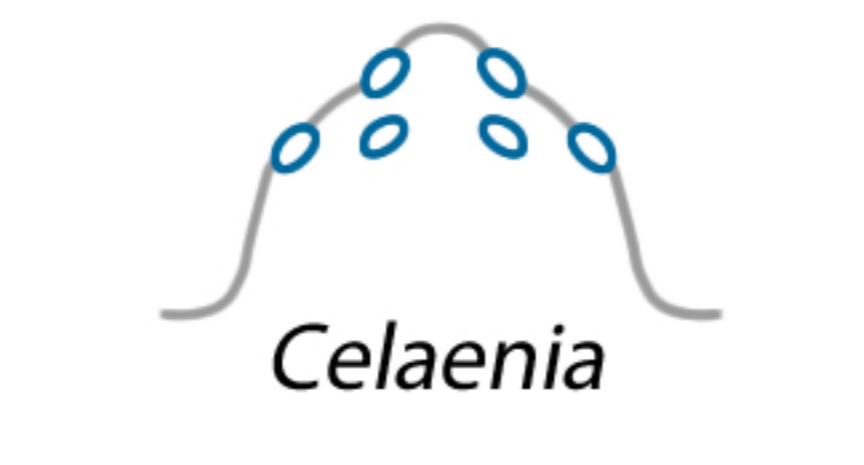
Cyclosa
ARANEIDAE



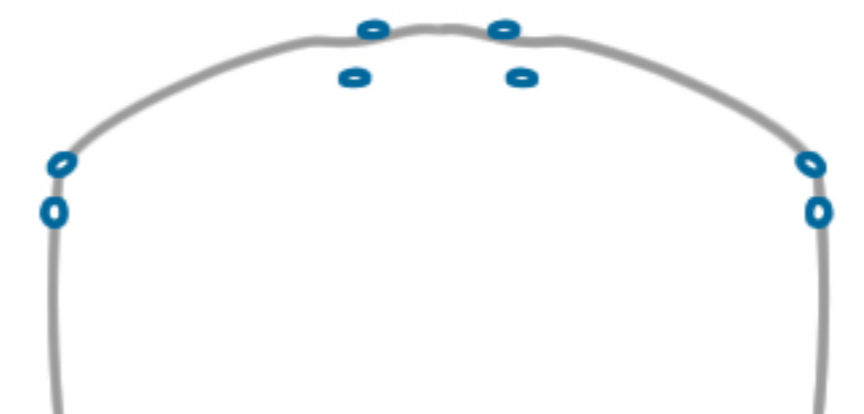
Ordgarius
ARANEIDAE



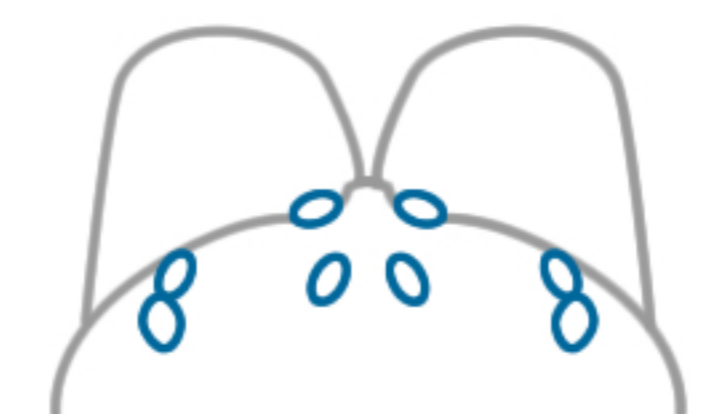
Heurodes turrita
ARANEIDAE



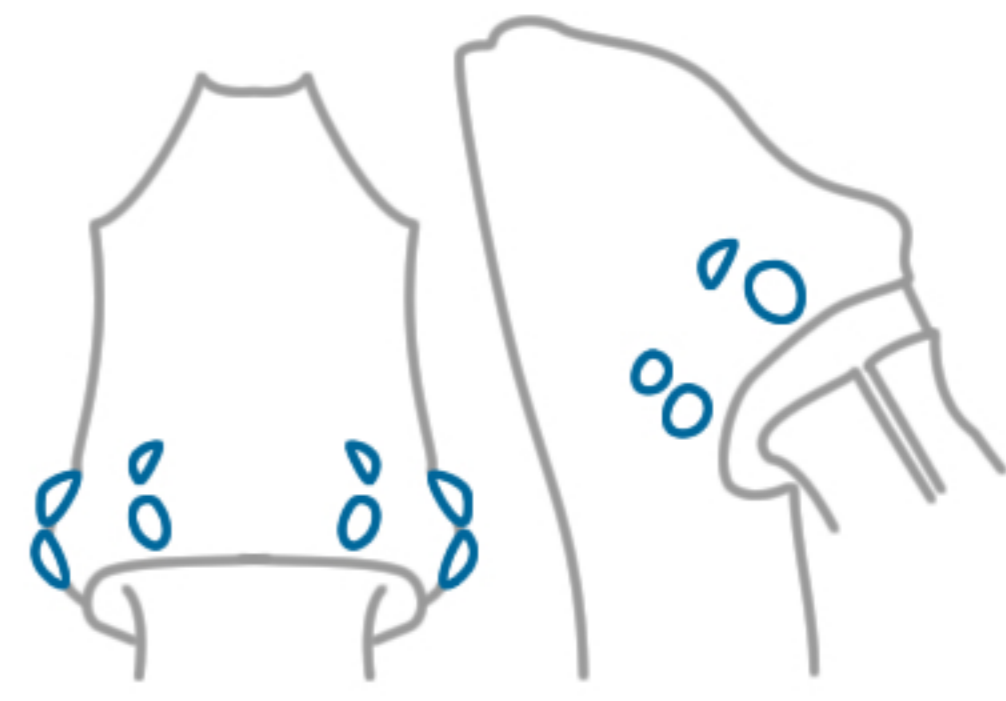
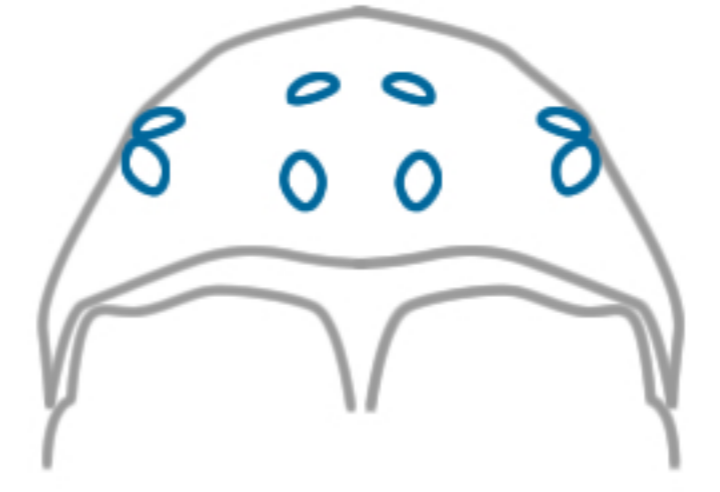
Celaenia



Paraplectanoides
ARANEIDAE



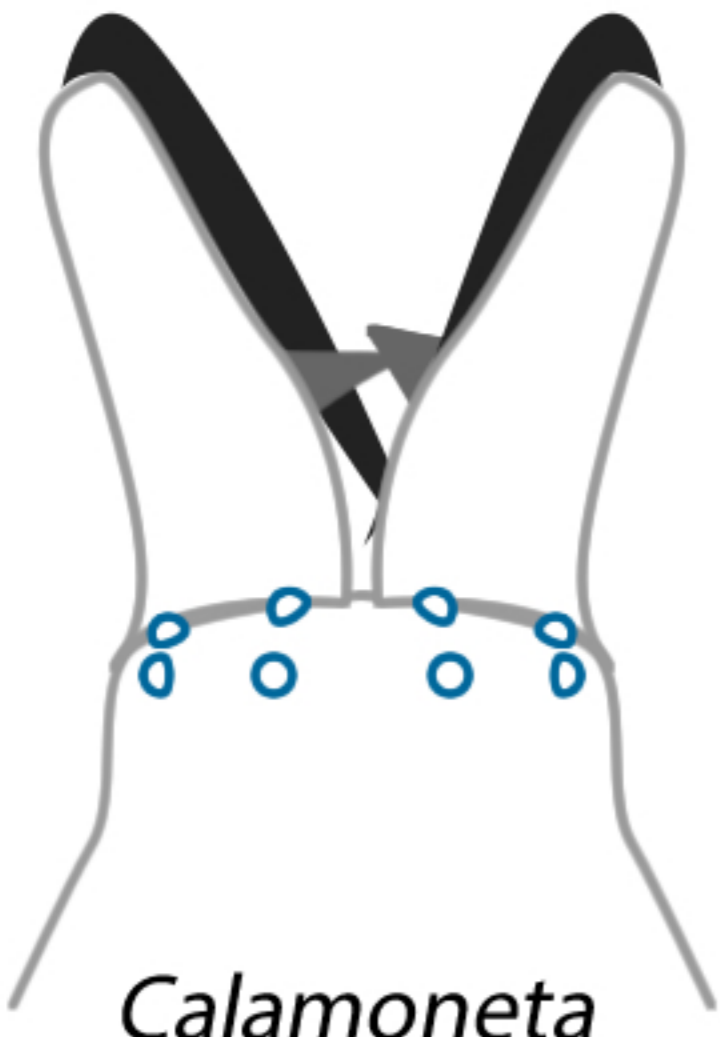
Phononognatha graeffei
ARANEIDAE



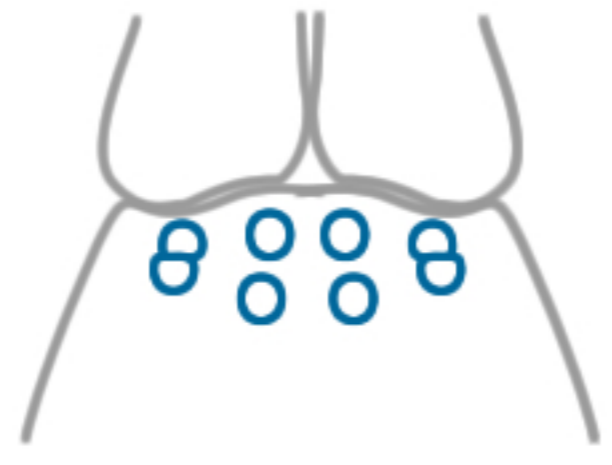
Austrarchaea
ARCHEIDAE



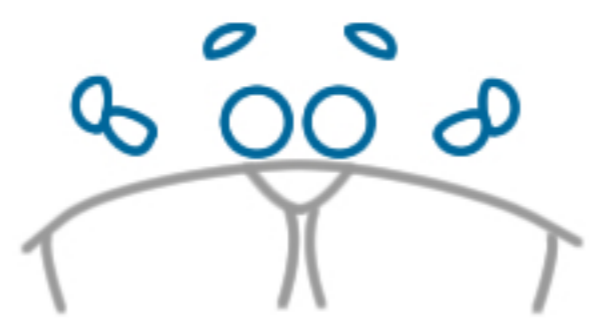
Cithaeron praedonius
CITHAERONIDAE



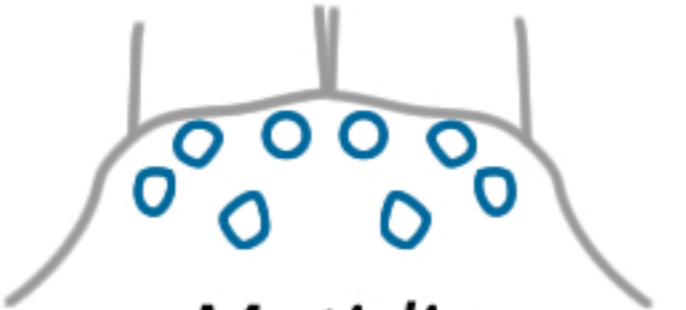
Calamoneta
EUTICHURIDAE



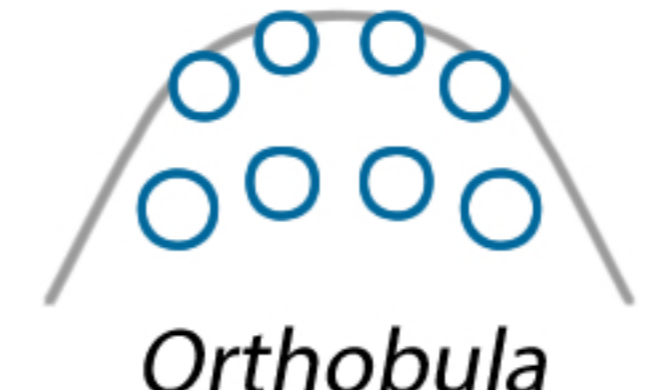
Cheiracanthium
EUTICHURIDAE



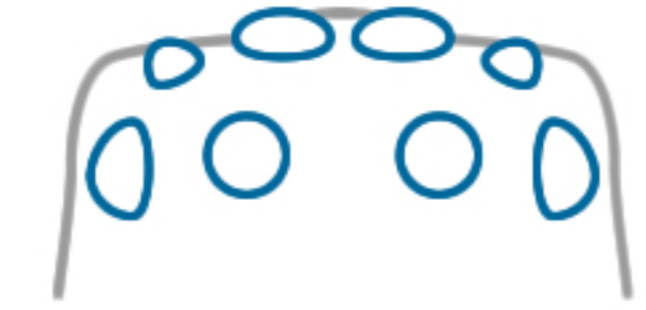
Clubiona pseudoapteroneta
CLUBIONIDAE



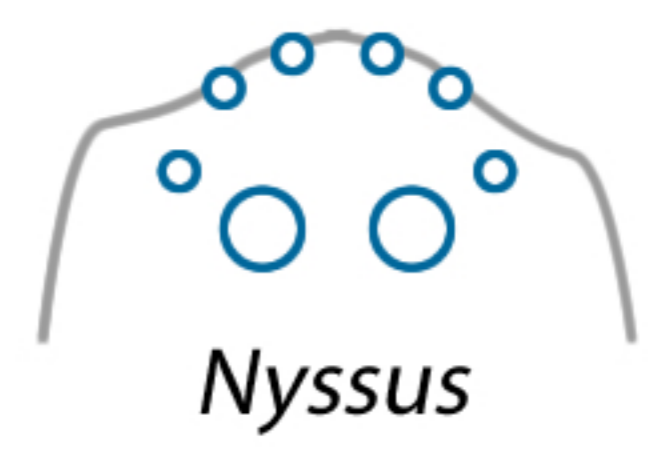
Matidia
EUTICHURIDAE



Orthobula



Disnyssus
CORINNIDAE



Nyssus

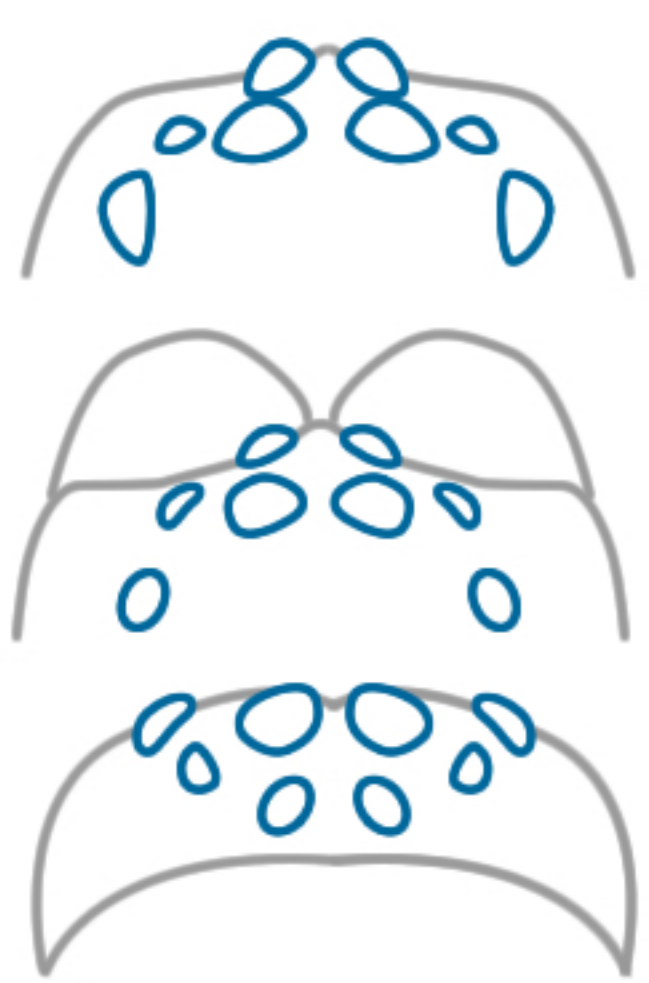


Copa kabana
CORINNIDAE

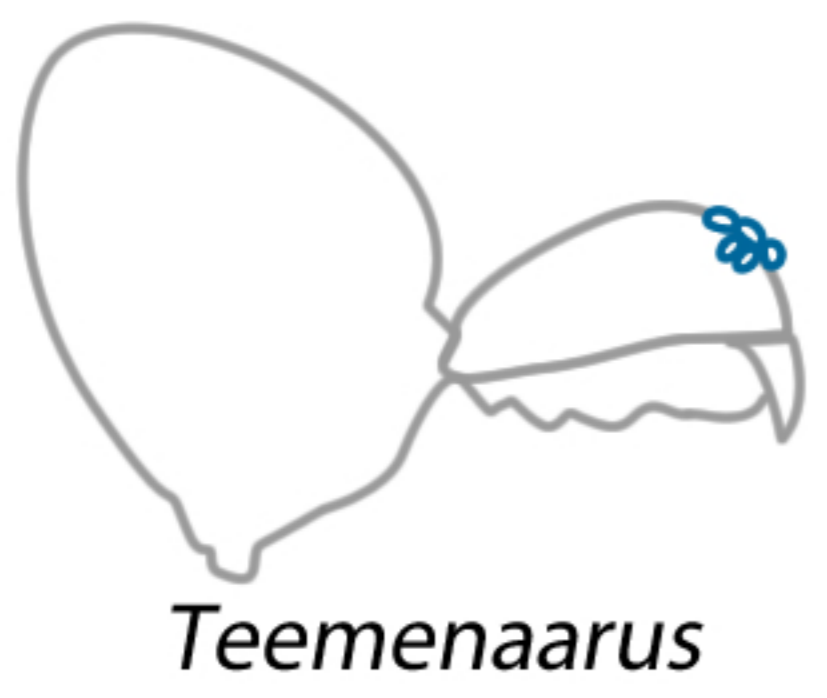
* not AU

EYE PATTERNS OF SOME AUSTRALIAN ARANEOMORPHS

Robert Whyte
rob@toadshow.com.au



Amauropelma
CTENIDAE



Teemenaarus



*Alaranea**
CYATHOLIPIDAE



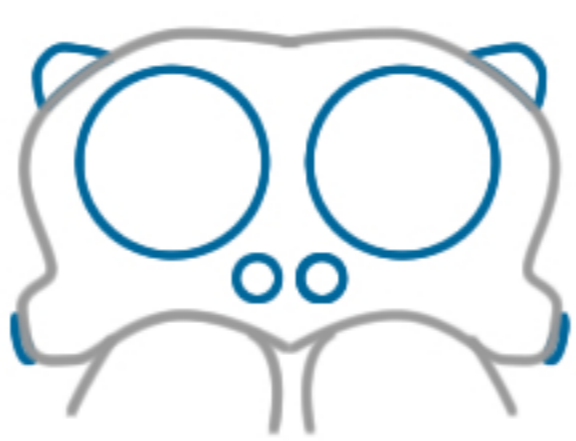
Cycloctenus



Cycloctenid
CYCLOCTENIDAE



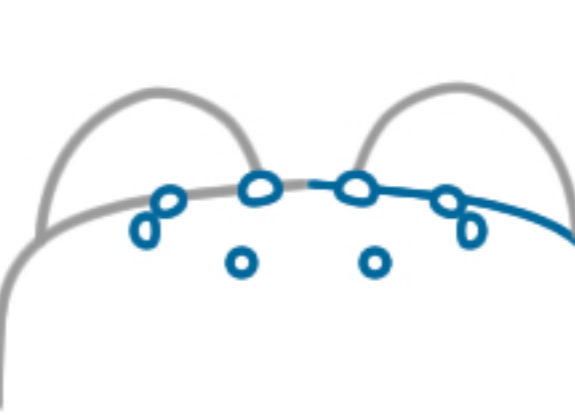
Avella



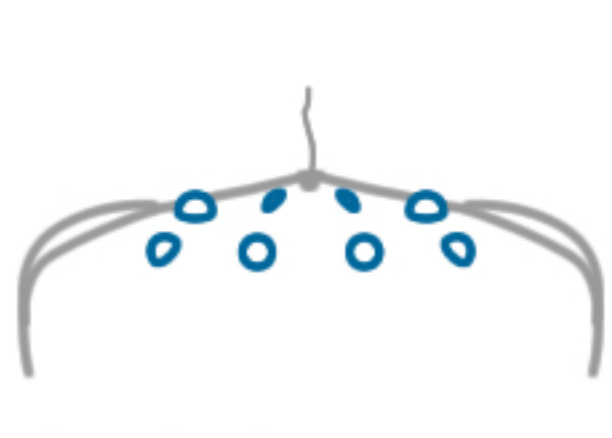
Deinopsis subrufa
DEINOPIIDAE



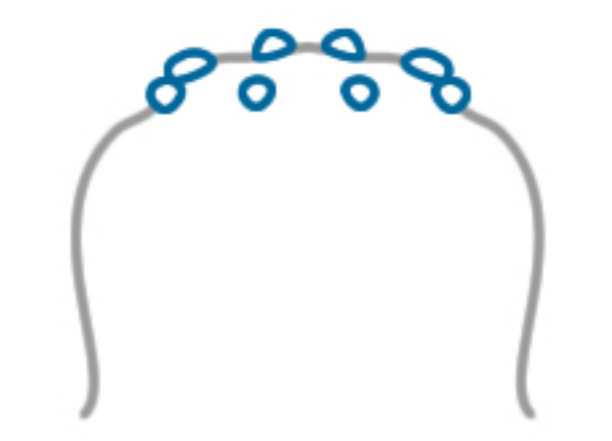
Badumna sp.



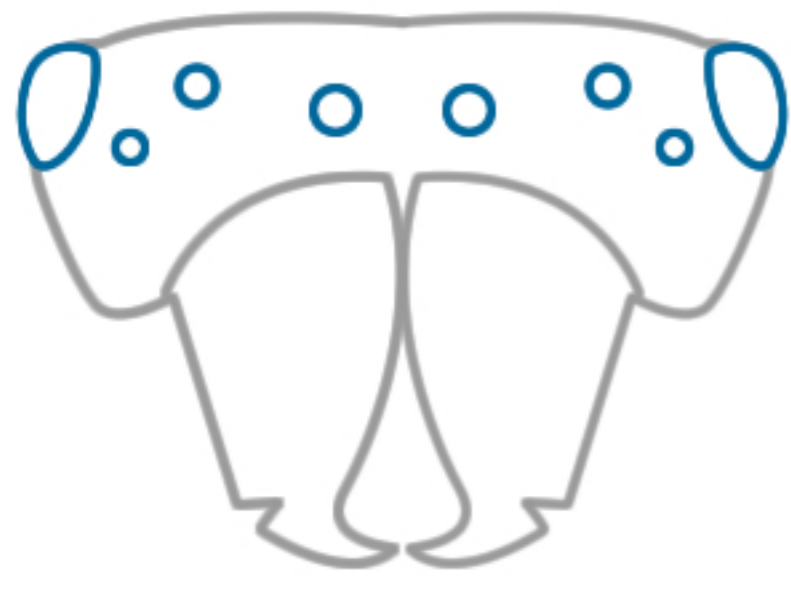
Badumna longinqua
DESIDAE



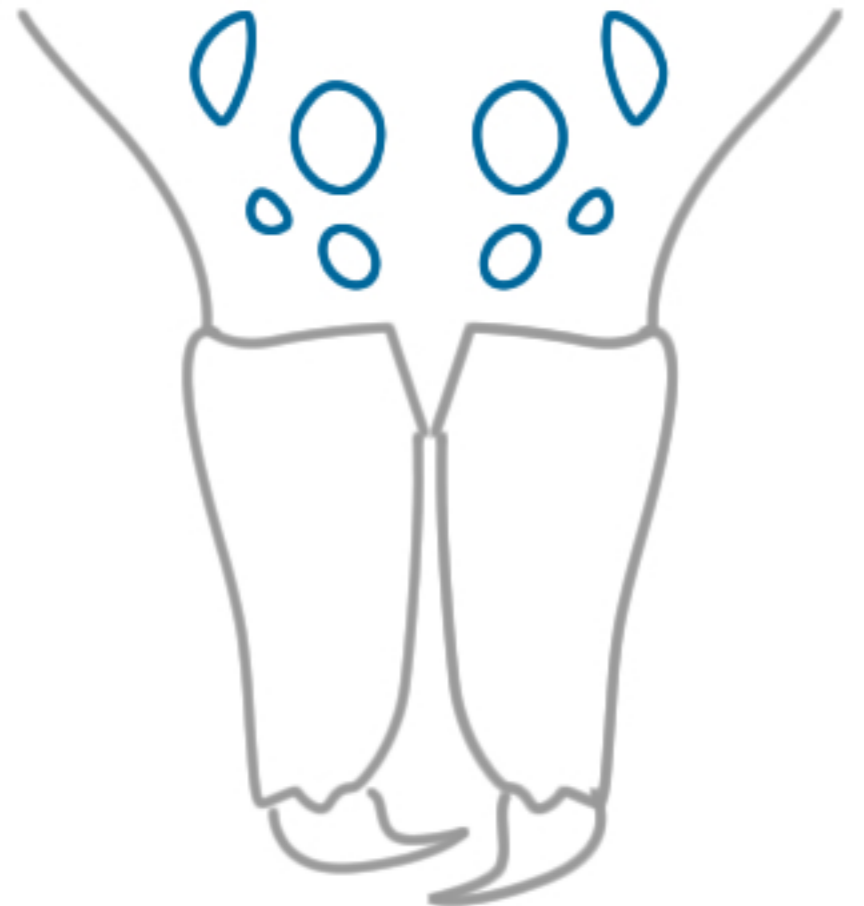
Desis kenyonae



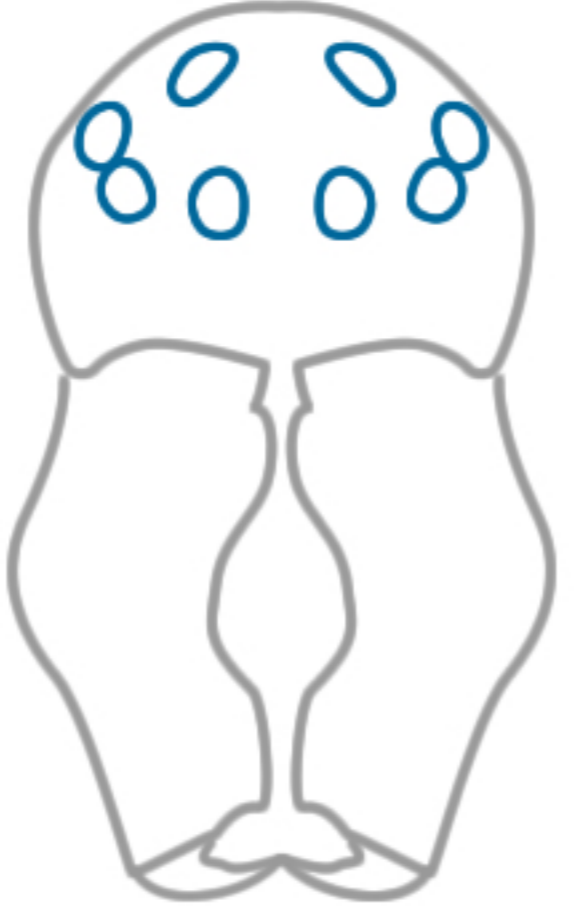
Phryganoporus candidus
DESIDAE



Toxops
DESIDAE



Toxopsoides
DESIDAE

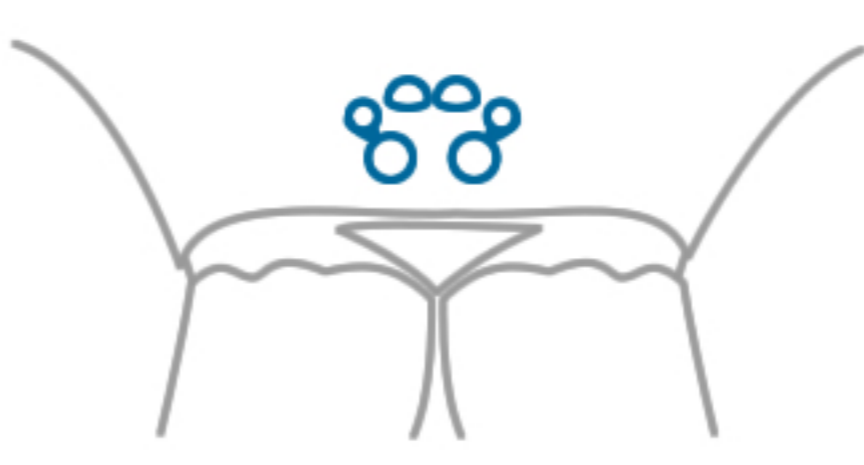


Dictynid

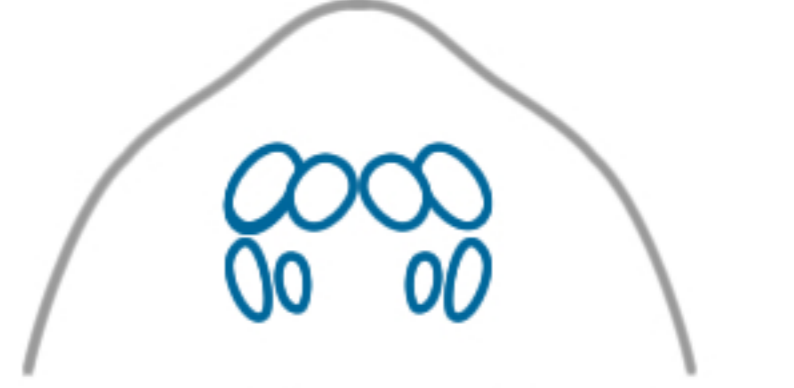
Dictynid
DICTYNIDAE



Dictyna bifasciata
DICTYNIDAE



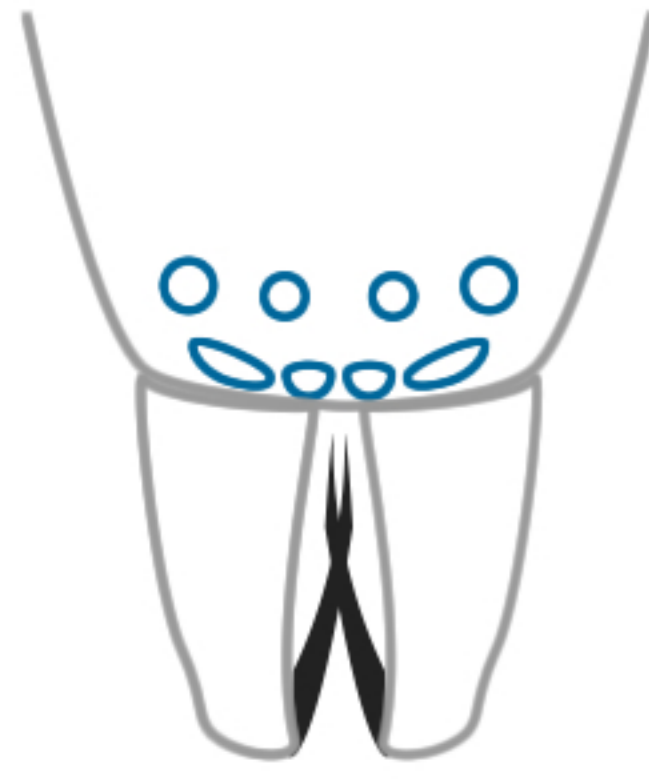
Dysdera crocata
DYSDERIDAE



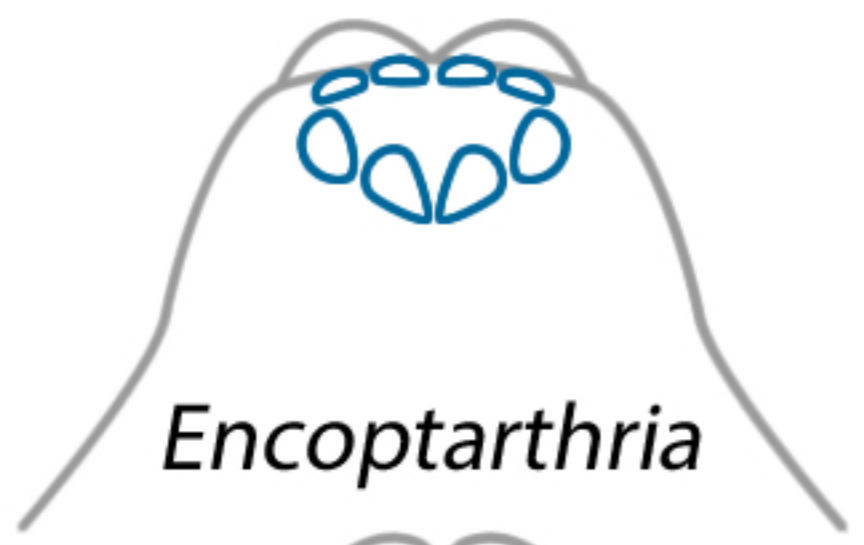
Wandella waldockae



Wandella alinjarra
FILISTATIDAE



Oreo renmarki
GALLIENIELLIDAE



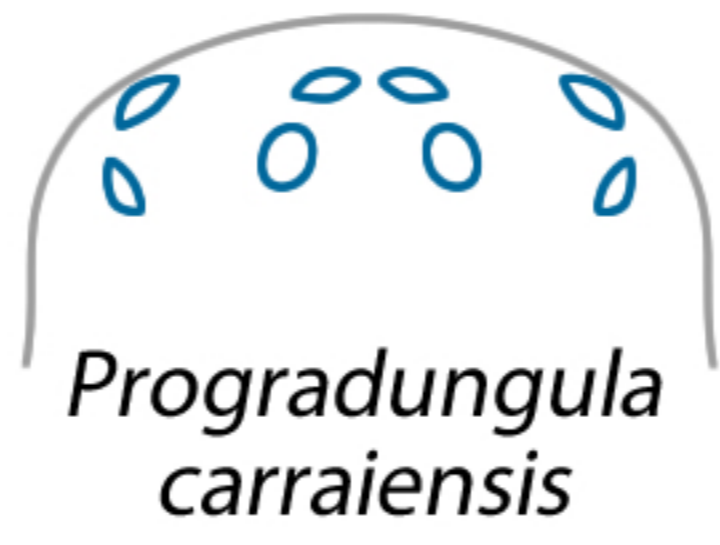
Encoptarthria



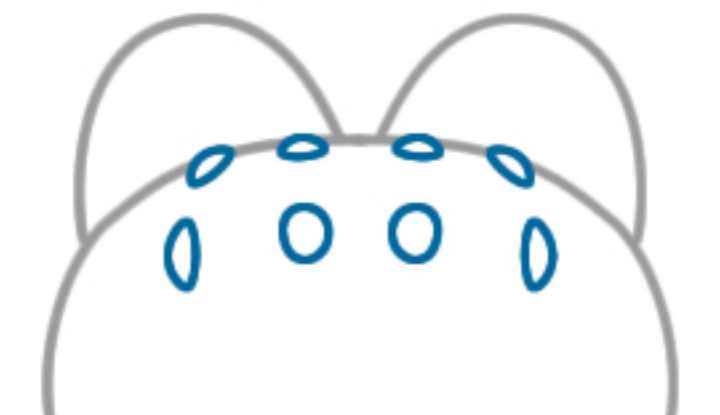
Eilica
GNAPHOSIDAE



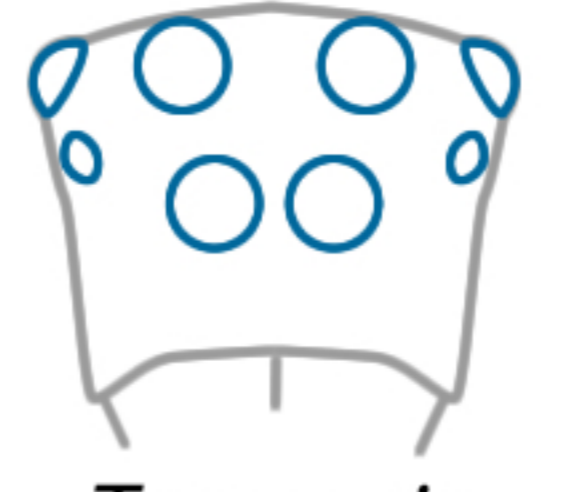
Gnaphosa
GNAPHOSIDAE



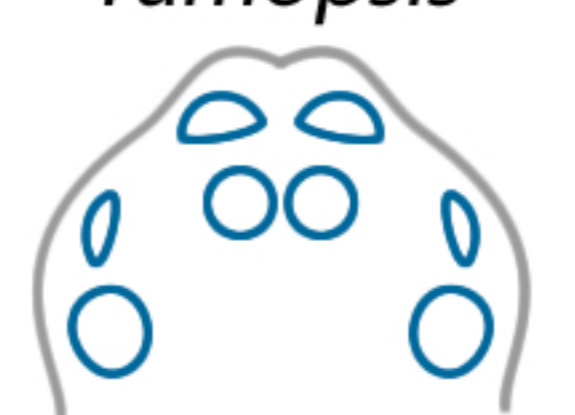
Progradungula carraiensis



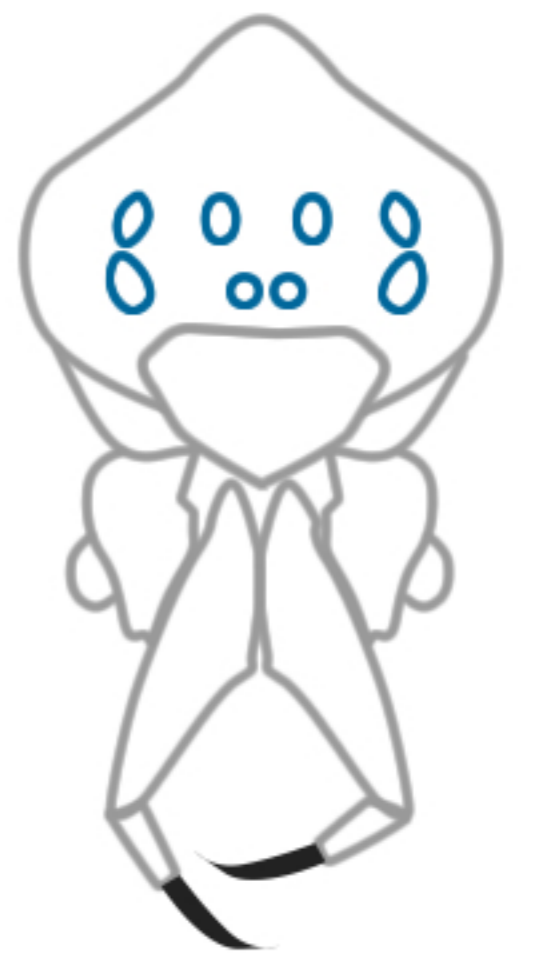
*Gradungula sorenseni**
GRADUNGULIDAE



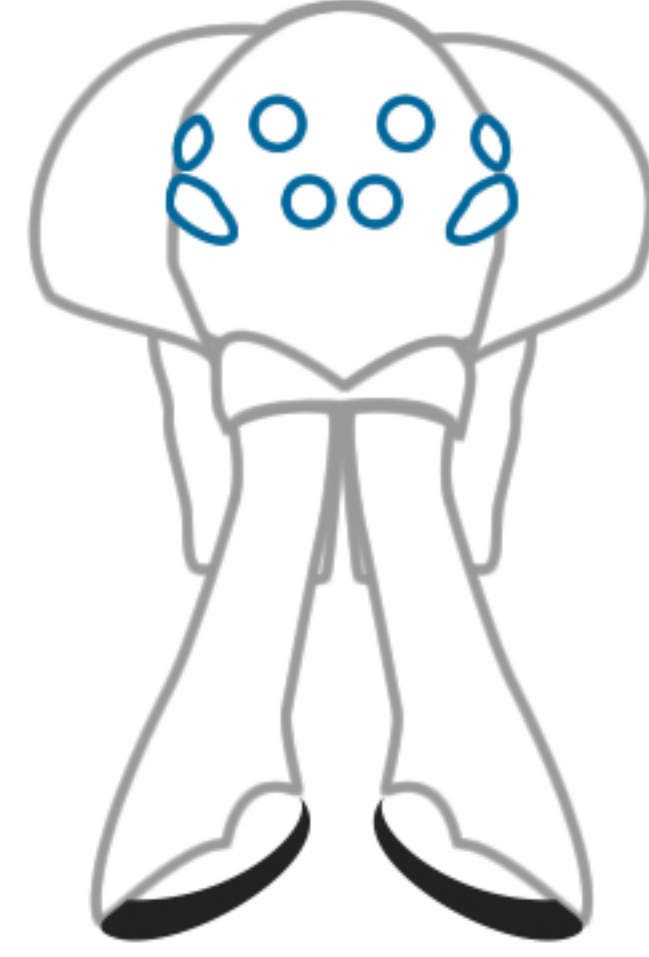
Tamopsis



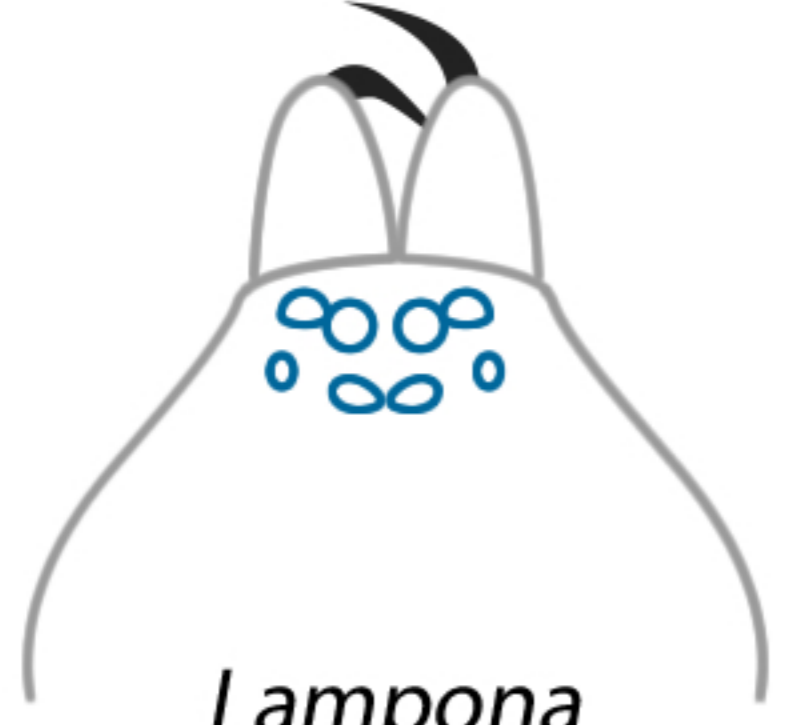
Tamopsis brisbanensis
HERSILIIDAE



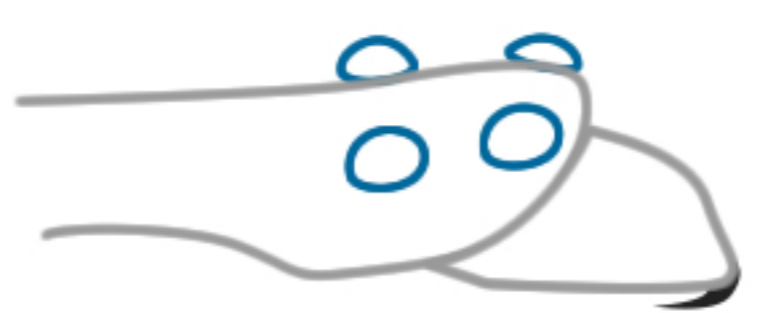
Holarchaea globosa
HOLARCHAEIDAE



Holarchaeid
HOLARCHAEIDAE



Lampona
LAMPONIDAE



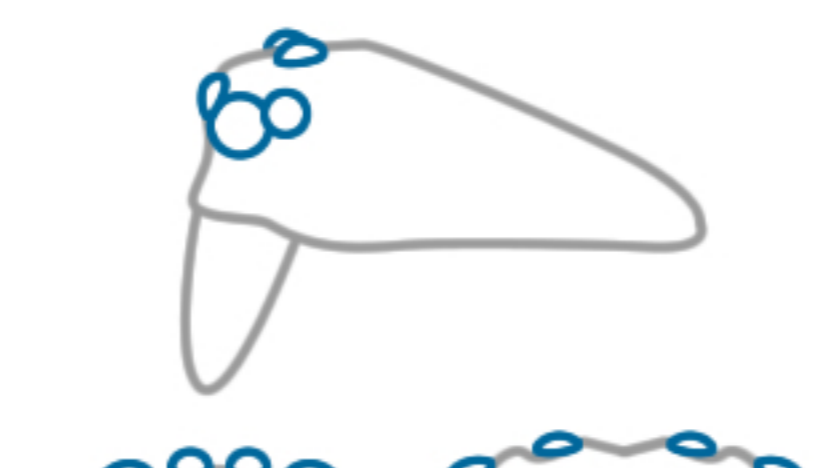
Platylampona mazeppa
LAMPONIDAE



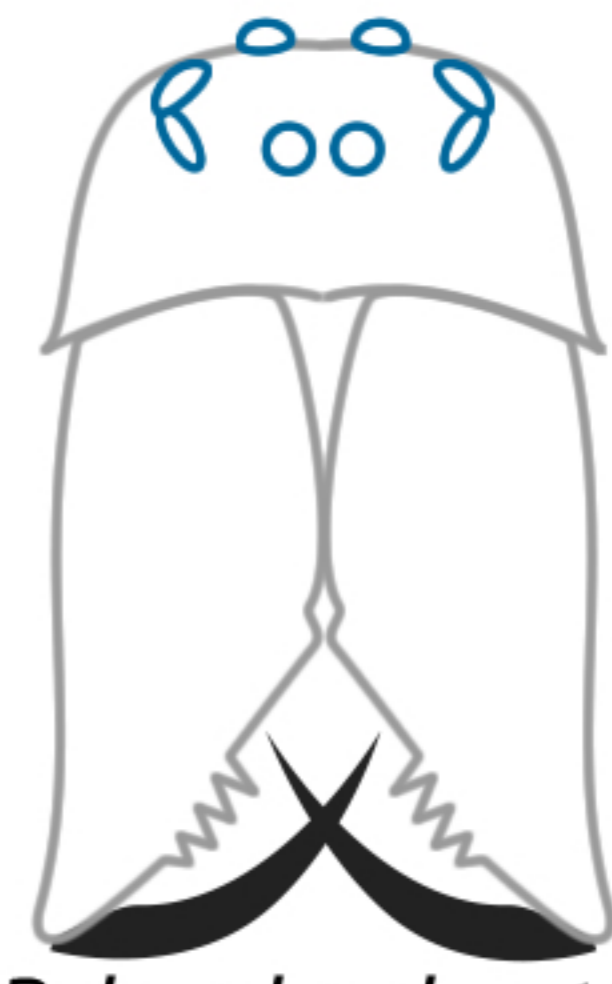
Australolyniphia



Laperousea
LINYPHIIDAE



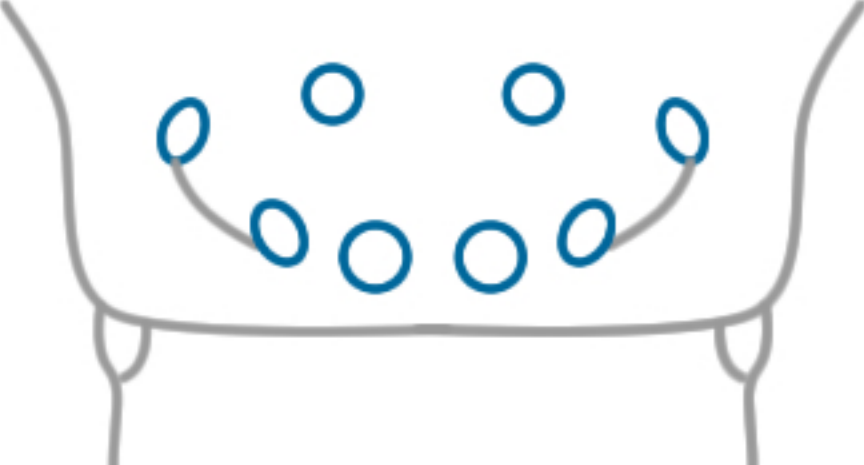
Knischatiria
LINYPHIIDAE



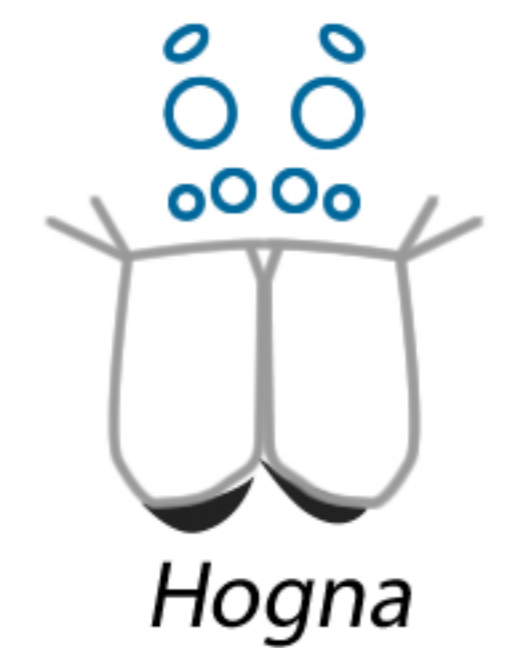
Palaeohyphantes
LINYPHIIDAE

EYE PATTERNS OF
SOME AUSTRALIAN
ARANEOMORPHS

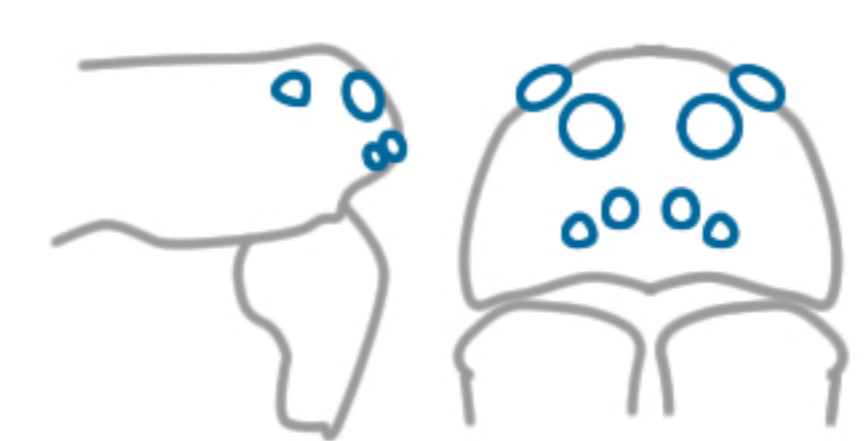
Robert Whyte
rob@toadshow.com.au



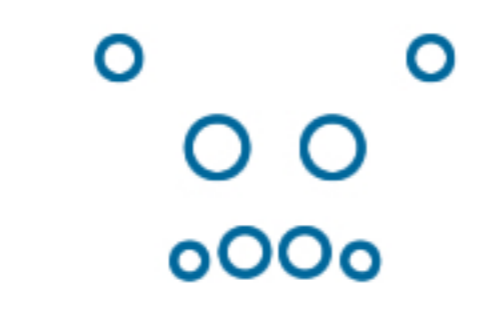
Montebello tenuis
LIOCRANIDAE



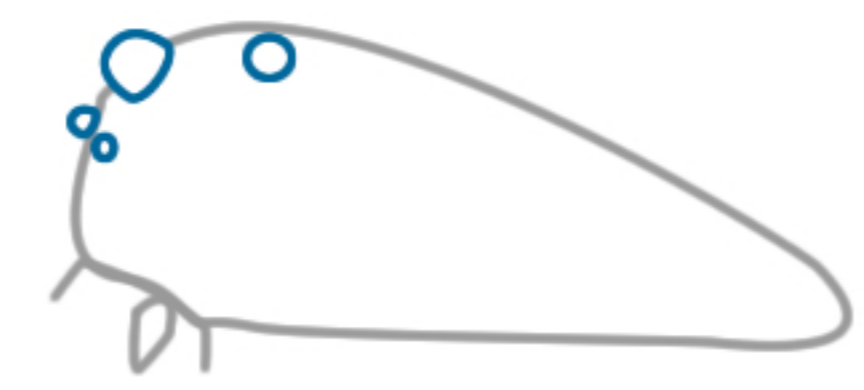
Artoriopsis
LYCOSIDAE



Anomalosa



Diahogna
LYCOSIDAE



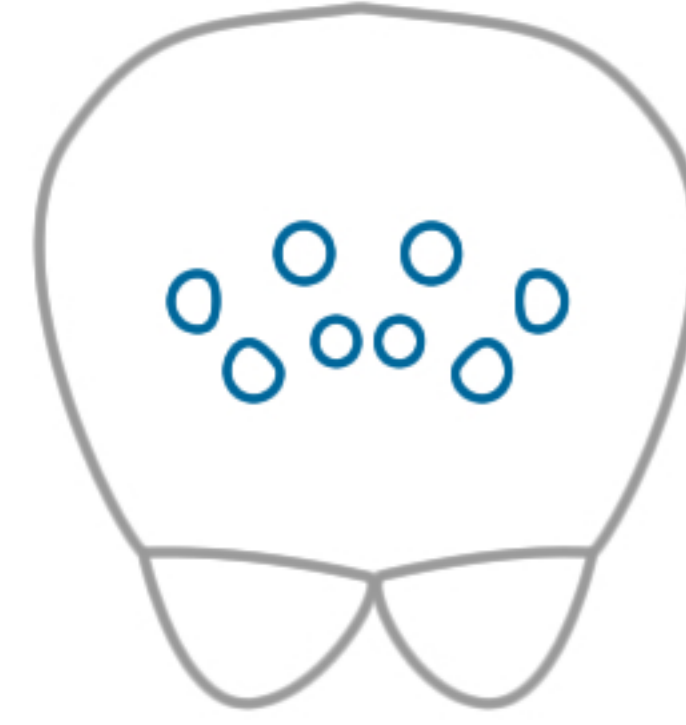
Hoggicosa
LYCOSIDAE



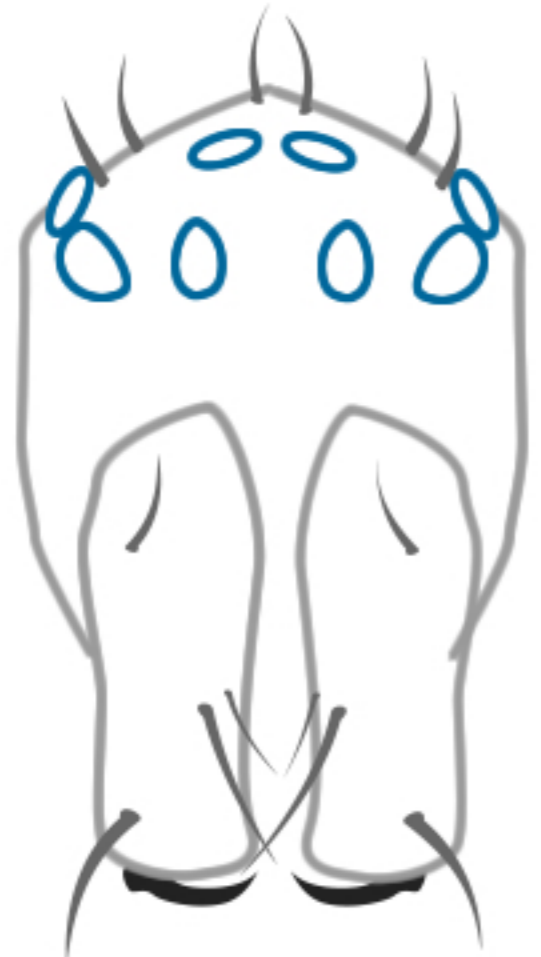
Tapetosa
LYCOSIDAE



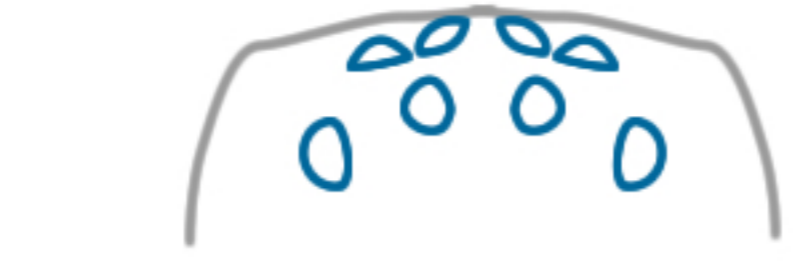
Malkara loricata
MALKARIDAE



Micropholcomma
MICROPHOLCOMMATIDAE



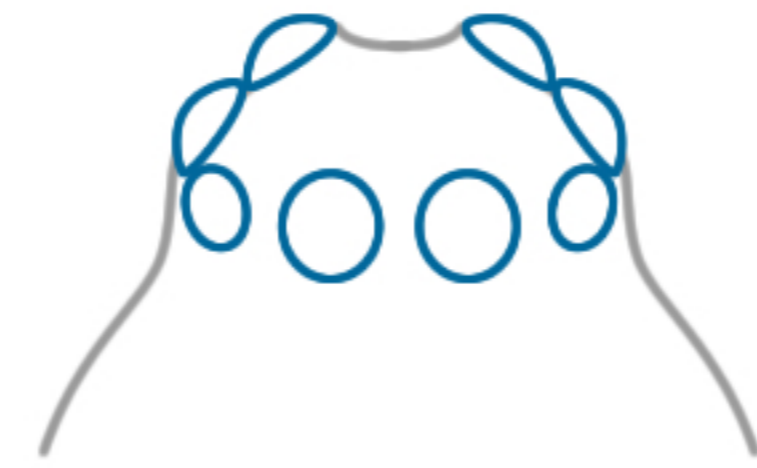
Australomimetes
MIMETIDAE



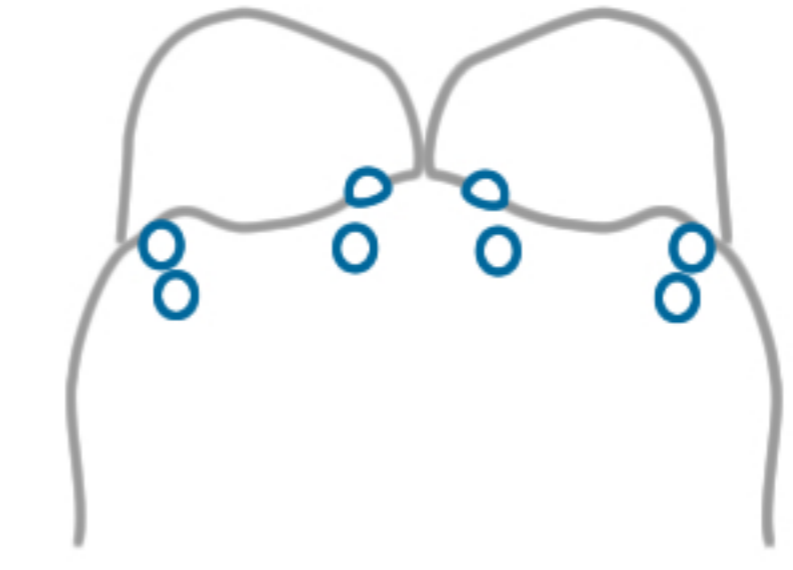
Mituliodon tarantulinus



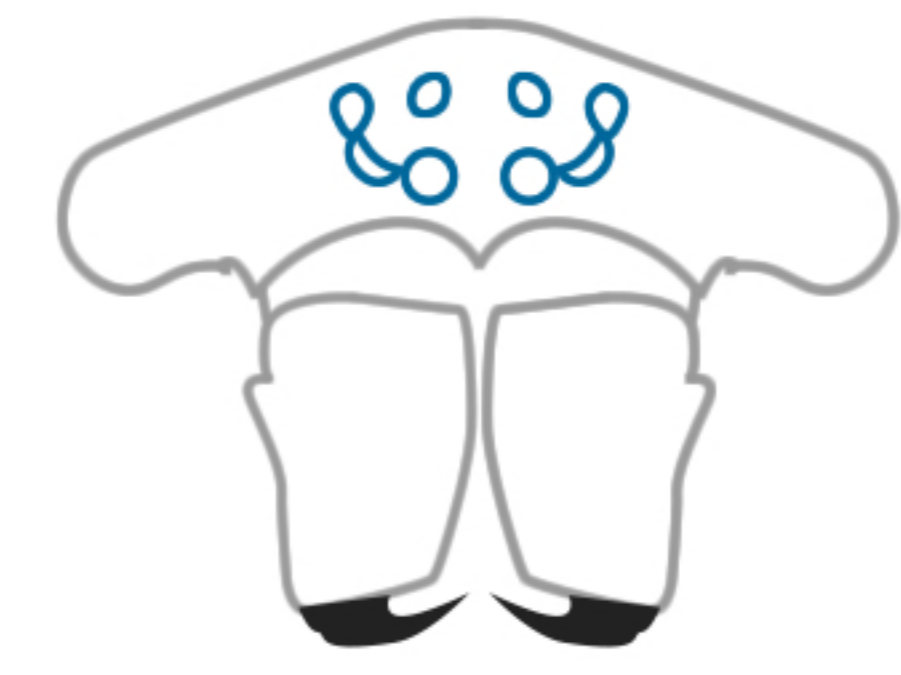
Diaprograptinae
MITURGIDAE



Mysmena
MYSMENIDAE



Nephila plumipes
NEPHILIDAE



Herennia
NEPHILIDAE



Nesticella
NESTICIDAE



Nicodamus mainae
NICODAMIDAE



Theotima minutissima
OCHYROCERATIDAE



Oecobius navus
OECOBIIDAE



Orchestina



Opopaea phineus (no eyes)



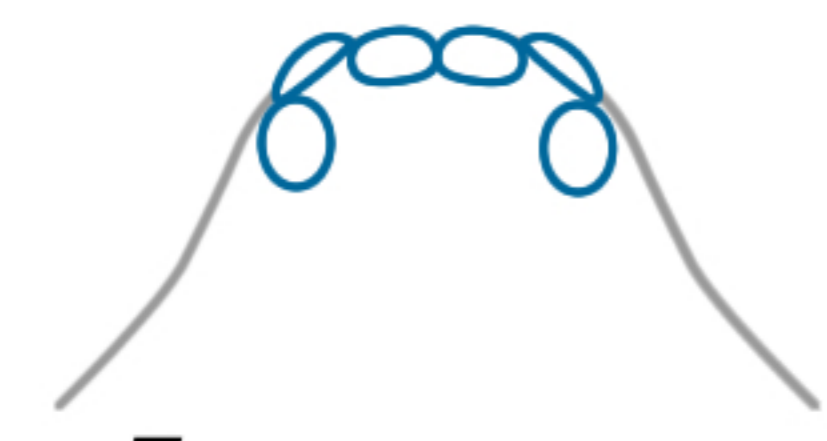
Gamasomorpha
OONOPIIDAE



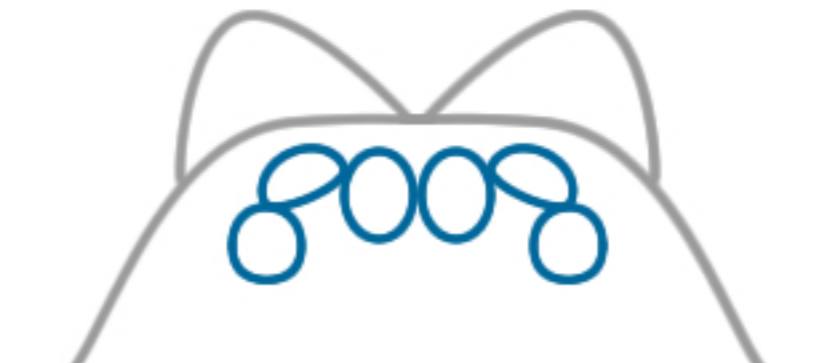
Opopaea jonesae
OONOPIIDAE



Prethopalpus
OONOPIIDAE



Tasmanoonops



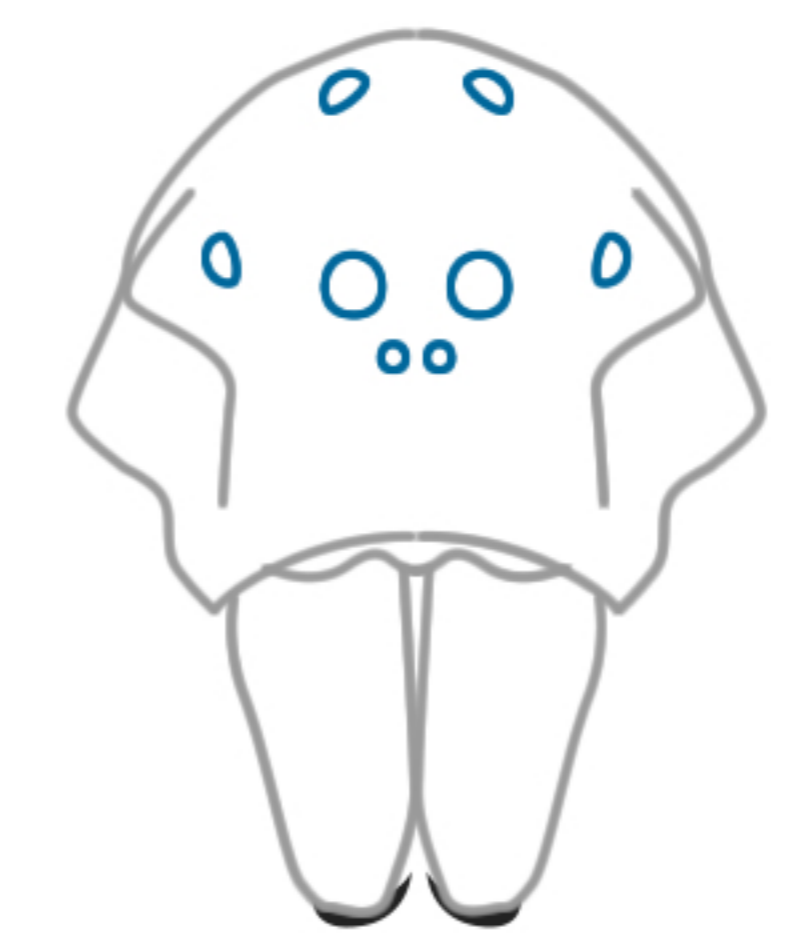
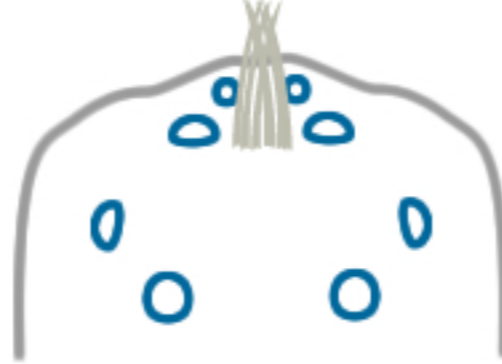
Hickmanolobus
ORSOLOBIDAE



Hamataliwa cooki
OXYOPIIDAE



Hamataliwa monroei
OXYOPIIDAE



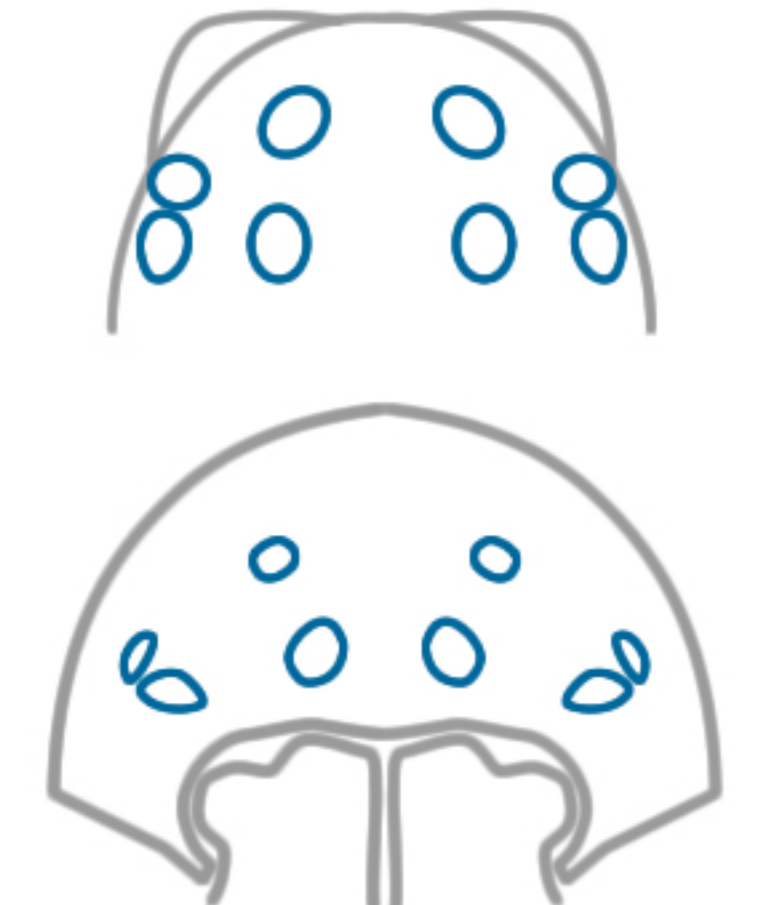
Oxyopes gracilipes
OXYOPIIDAE



Palpimanid
PALPIMANIDAE

EYE PATTERNS OF
SOME AUSTRALIAN
ARANEOMORPHS

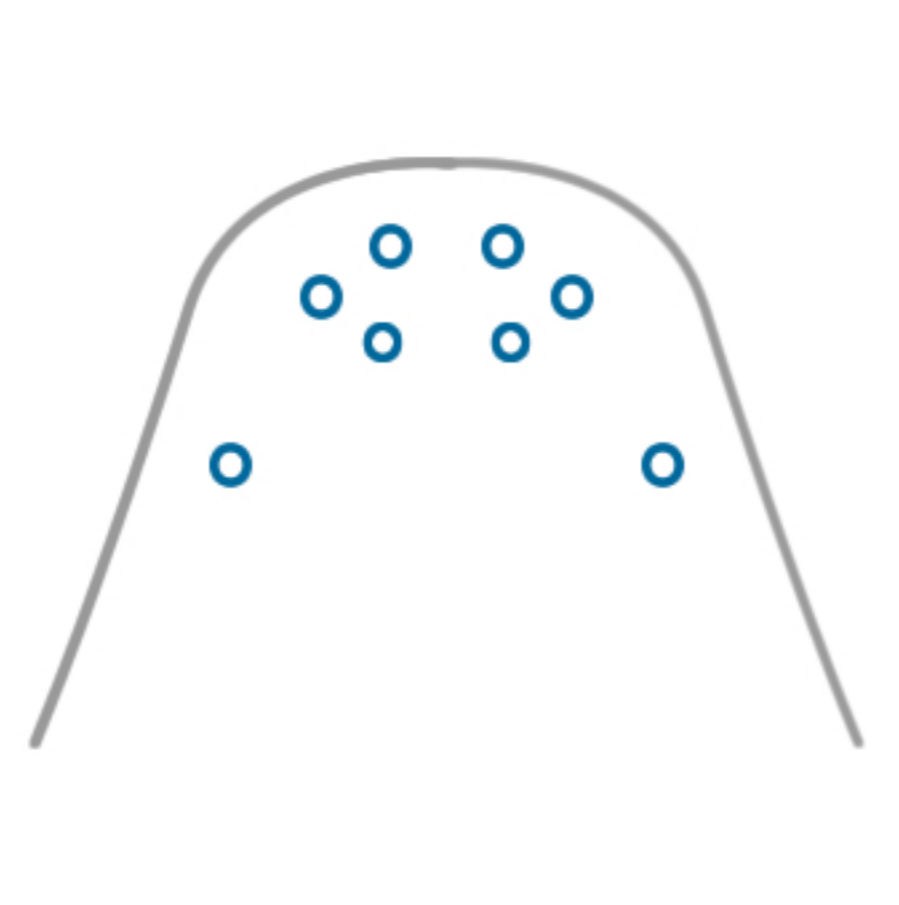
Robert Whyte
rob@toadshow.com.au



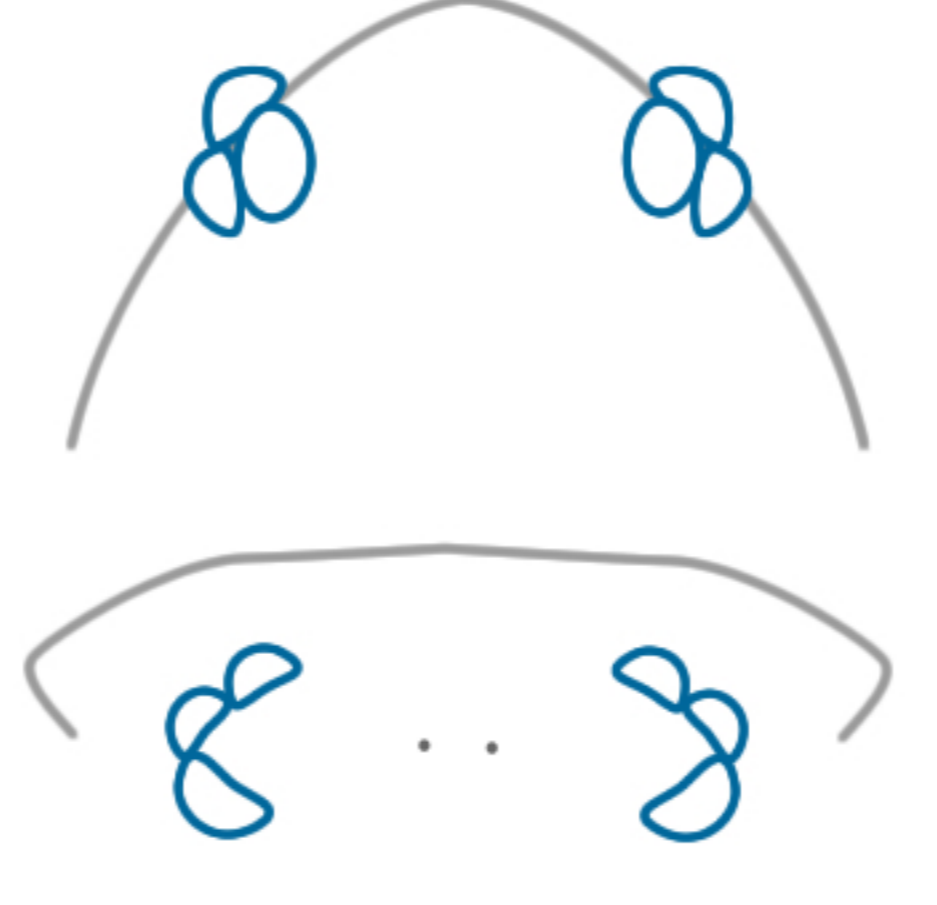
Pararchaea
PARARCHAEIDAE



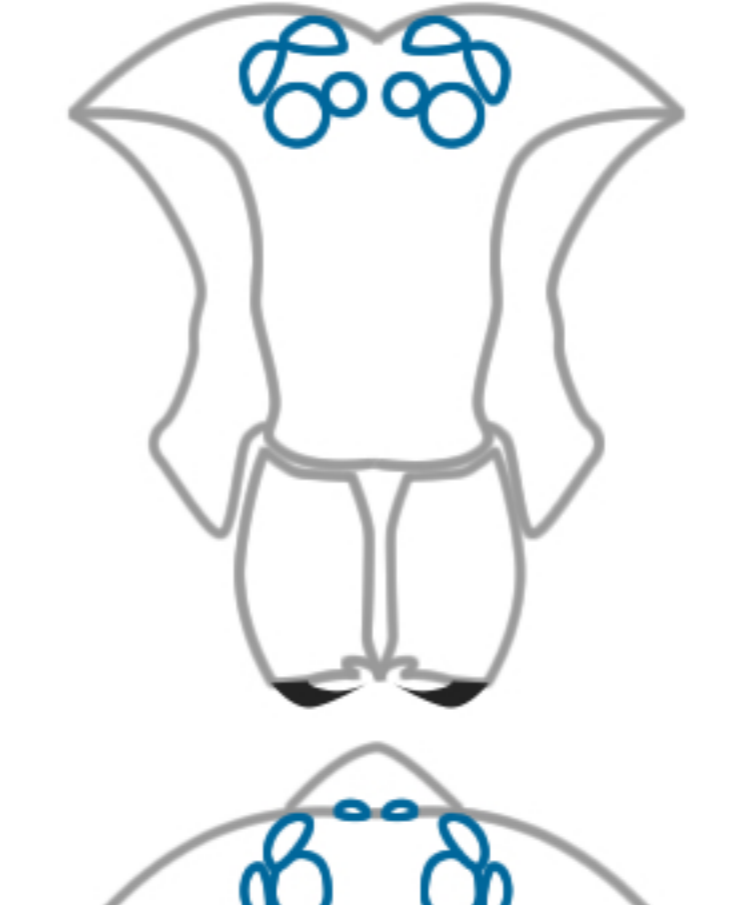
Periegopid
PERIEGOPIDAE



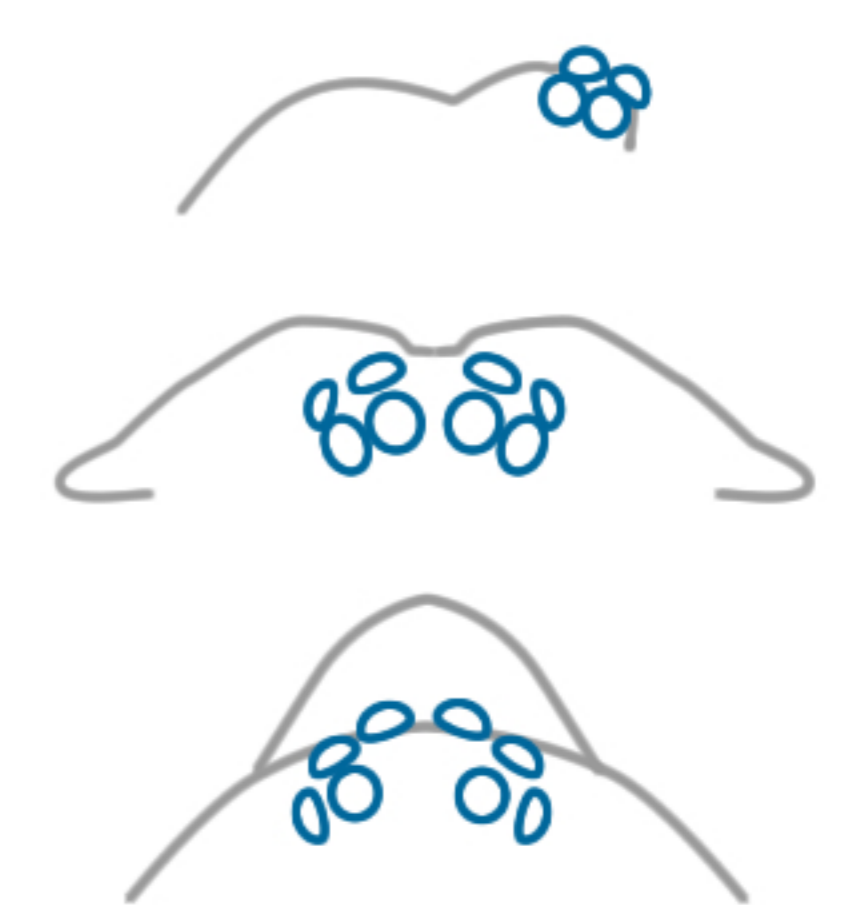
Tibellus tenellus
PHILODROMIDAE



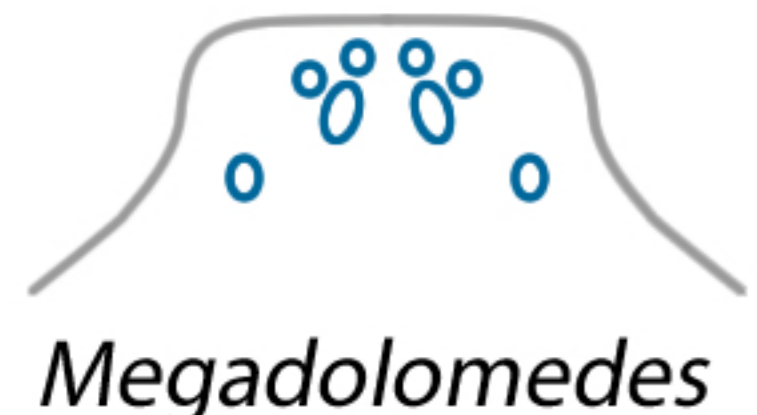
Micromerys
PHOLCIDAE



Pholcus
PHOLCIDAE



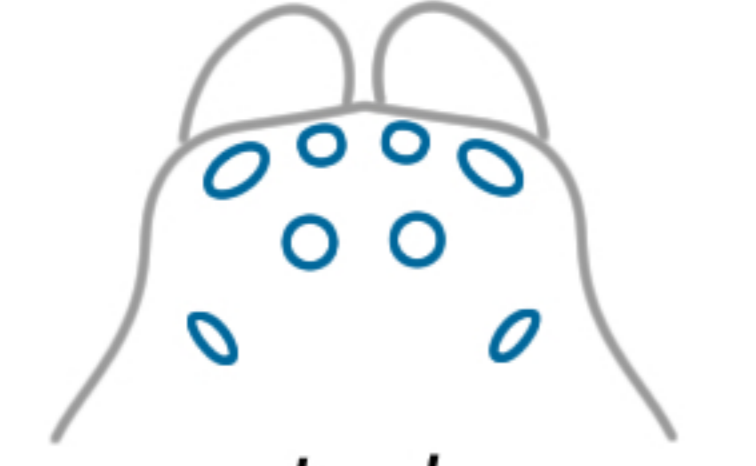
Trichocyclus nullabor
PHOLCIDAE



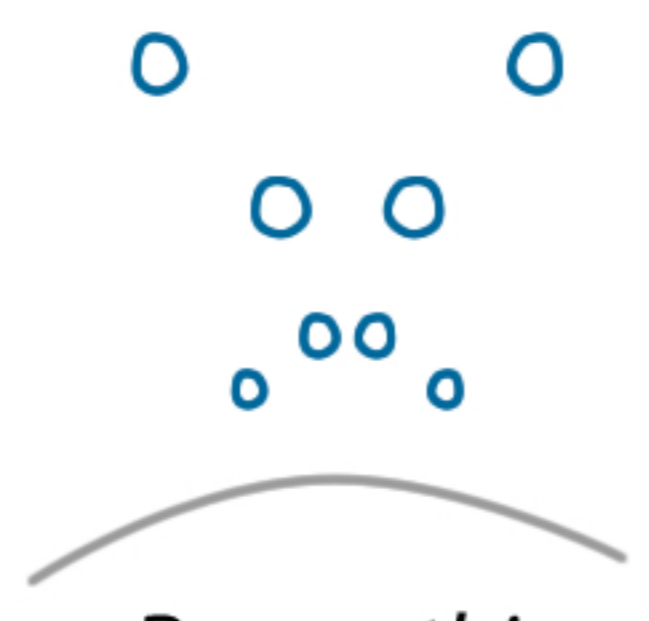
Megadolomedes



Dolomedes
PISAUROIDAE



Inola
PISAUROIDAE



Perenethis
PISAUROIDAE



Wesmaldra talgomine



Wydundra dauntton
PRODIDOMIDAE



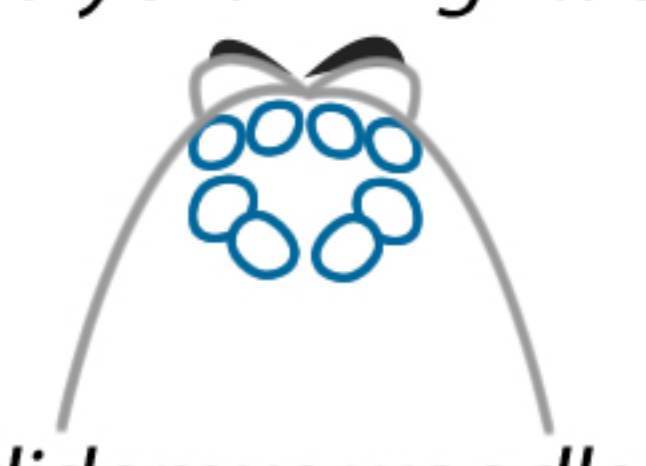
Myandra cambridgei



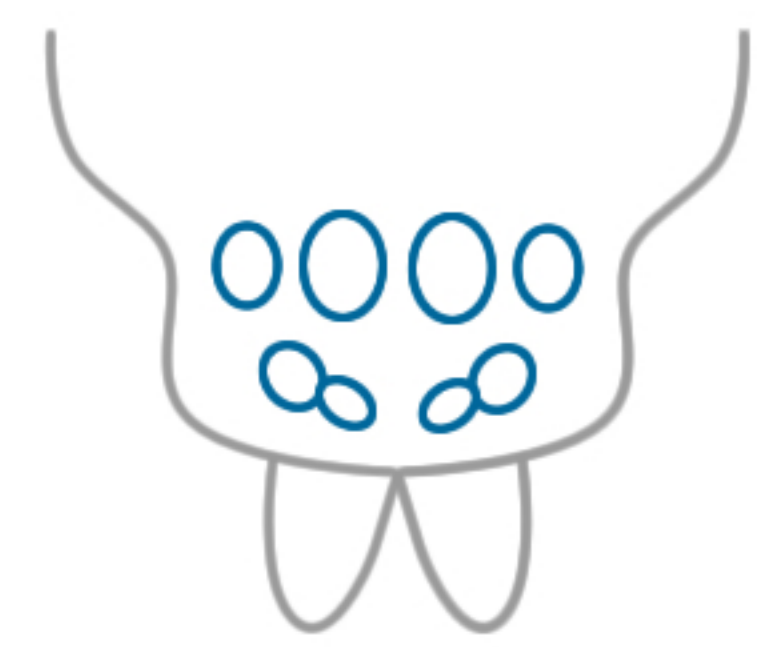
Nomindra leeuweni
PRODIDOMIDAE



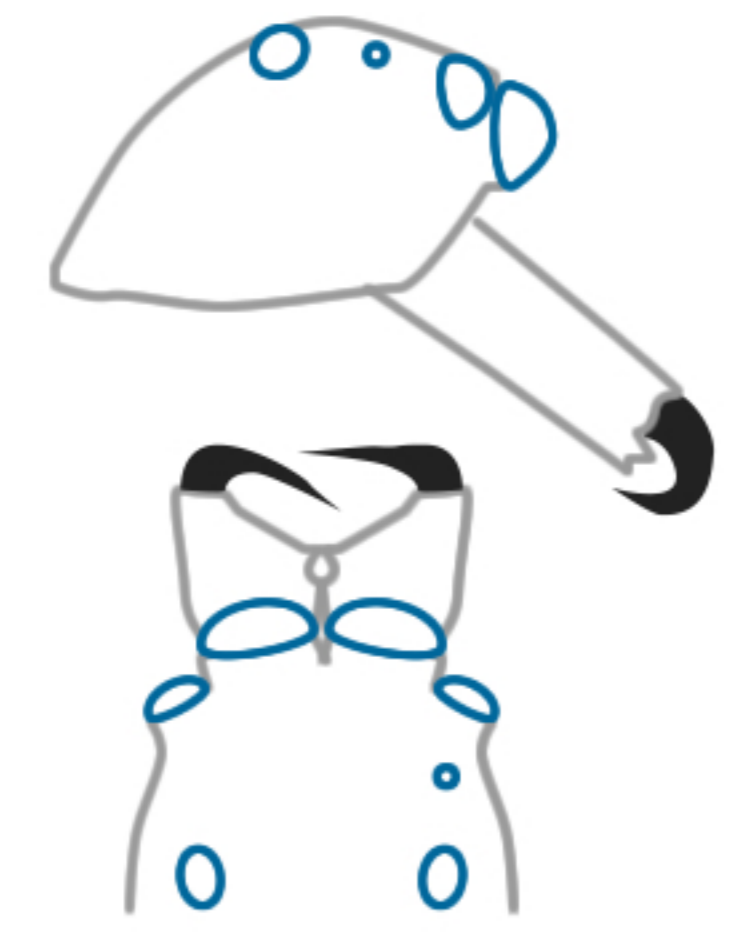
Molycria wrightae



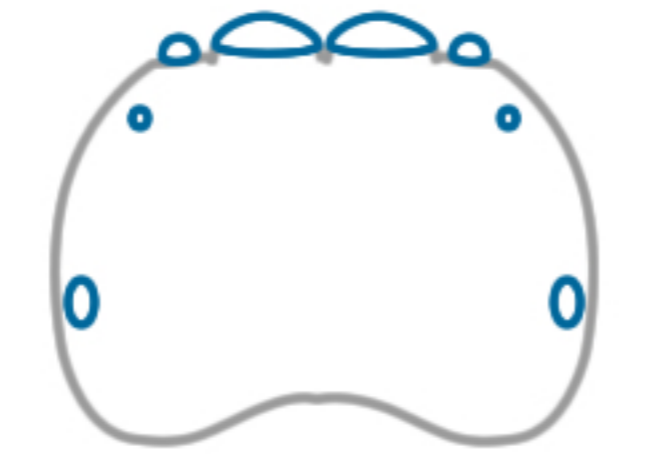
Prodidomus woodleigh
PRODIDOMIDAE



Psechrus
PSECHRIDAE



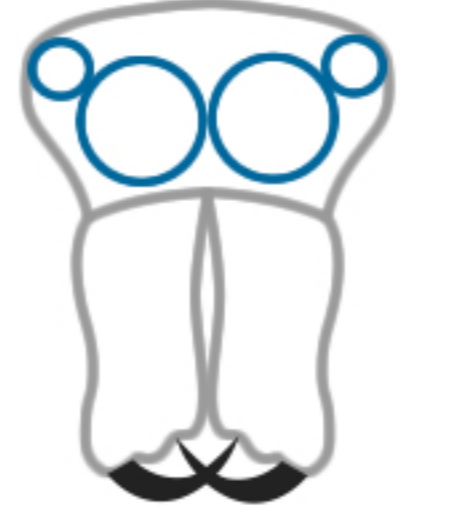
Aruana
SALTICIDAE



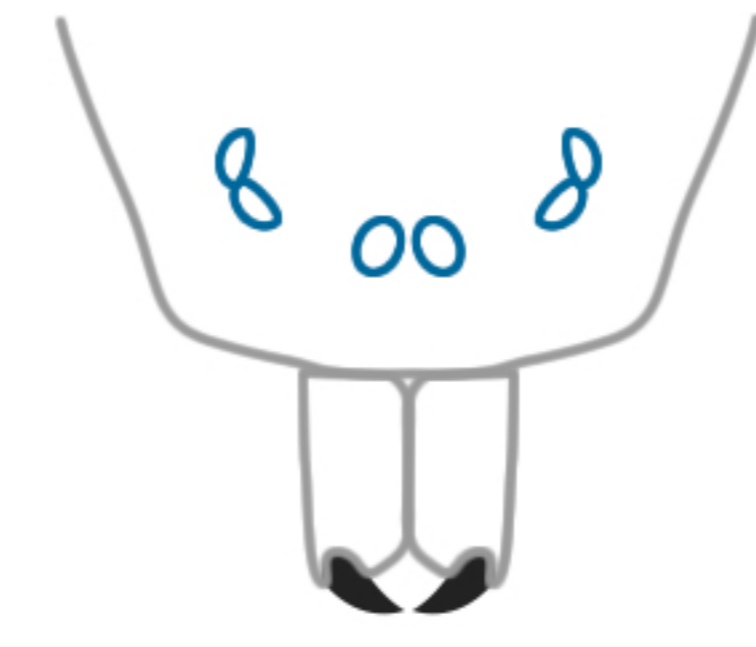
Simaethula



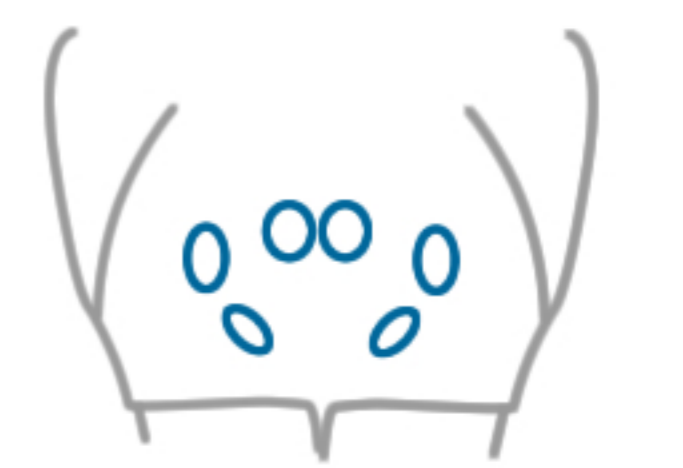
Bianor
SALTICIDAE



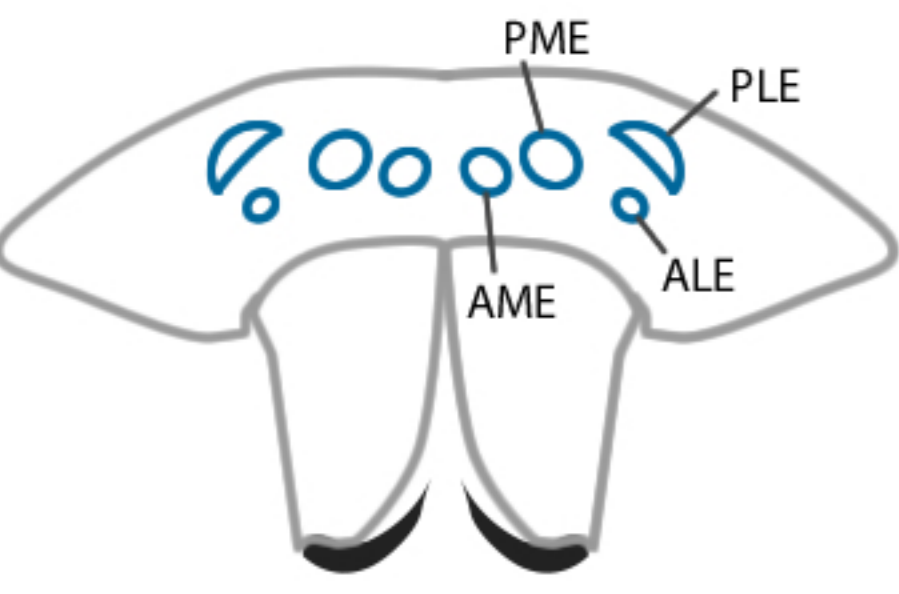
Apricia gen. nov. jovialis
SALTICIDAE



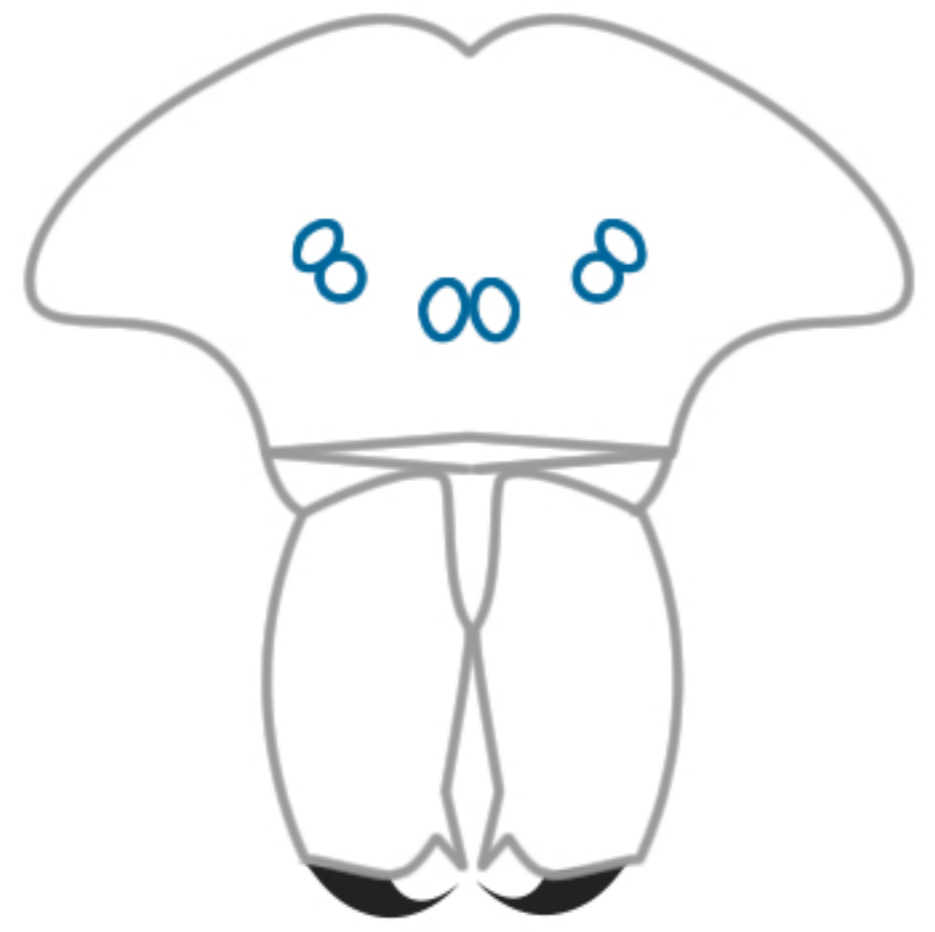
Scytodes
SCYTODIDAE



Segestria
SEGESTRIIDAE



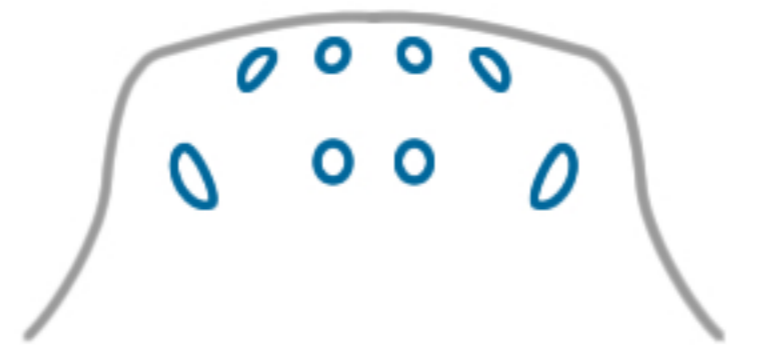
*Selenops**



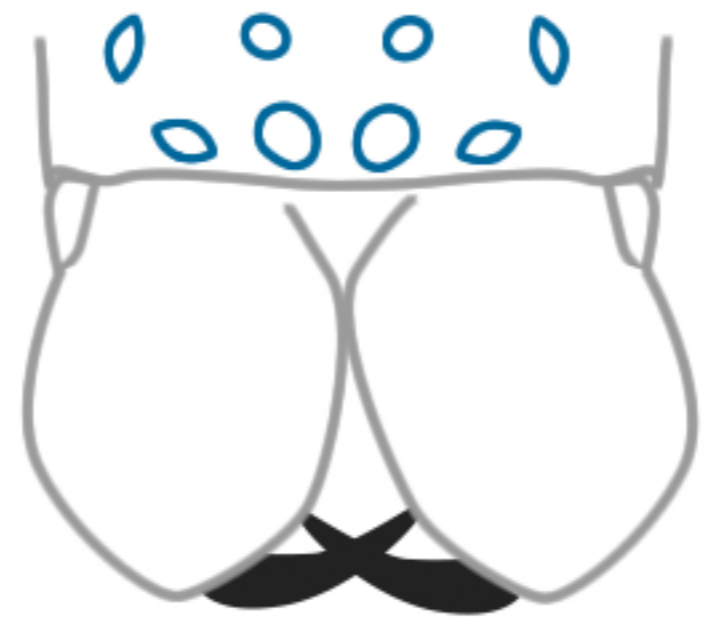
Loxosceles
SICARIIDAE



Heteropoda acuta



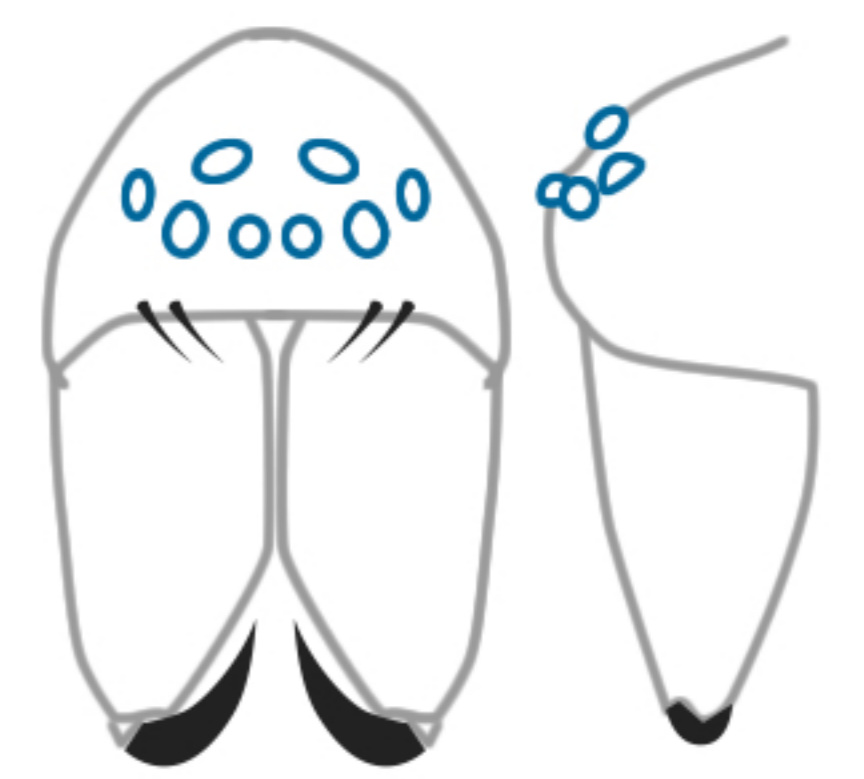
Heteropoda jugulans
SPARASSIDAE



Isopeda vasta
SPARASSIDAE



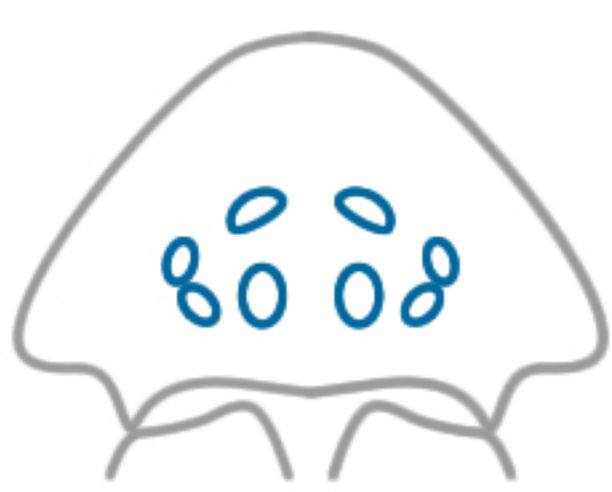
Isopedella
SPARASSIDAE



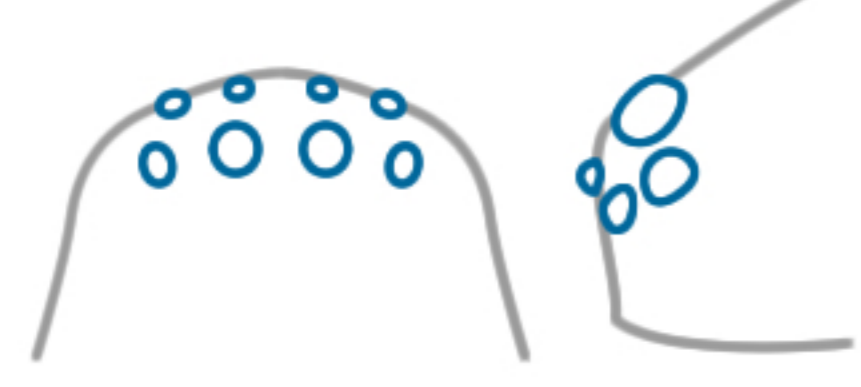
Barahna booloumba
STIPHIDIIDAE

EYE PATTERNS OF SOME AUSTRALIAN ARANEOMORPHS

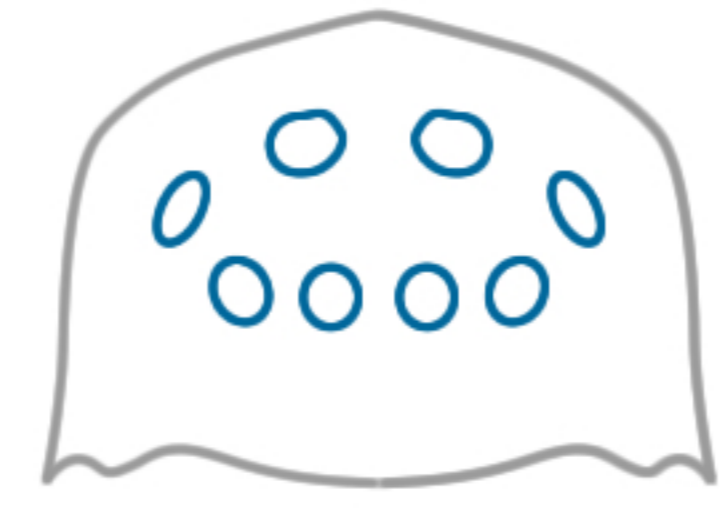
Robert Whyte
rob@toadshow.com.au



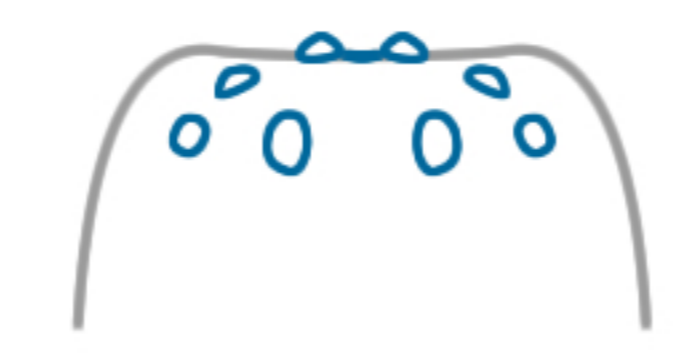
Borralla
STIPHIDIIDAE



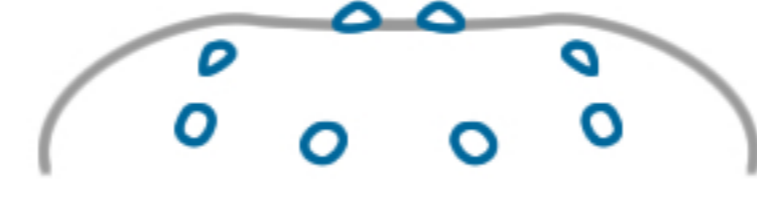
Malarina monteithi
STIPHIDIIDAE



Procambidgea
STIPHIDIIDAE



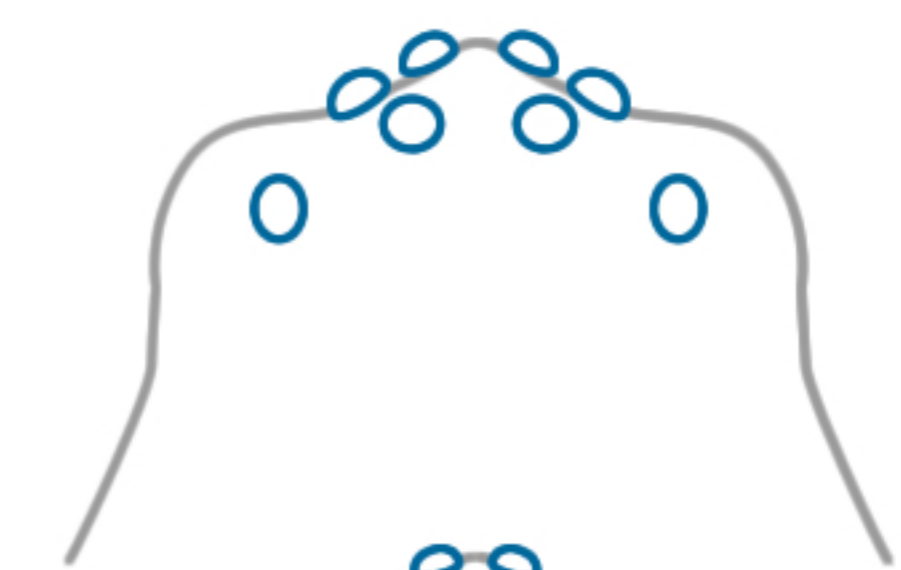
Baiami volucripes



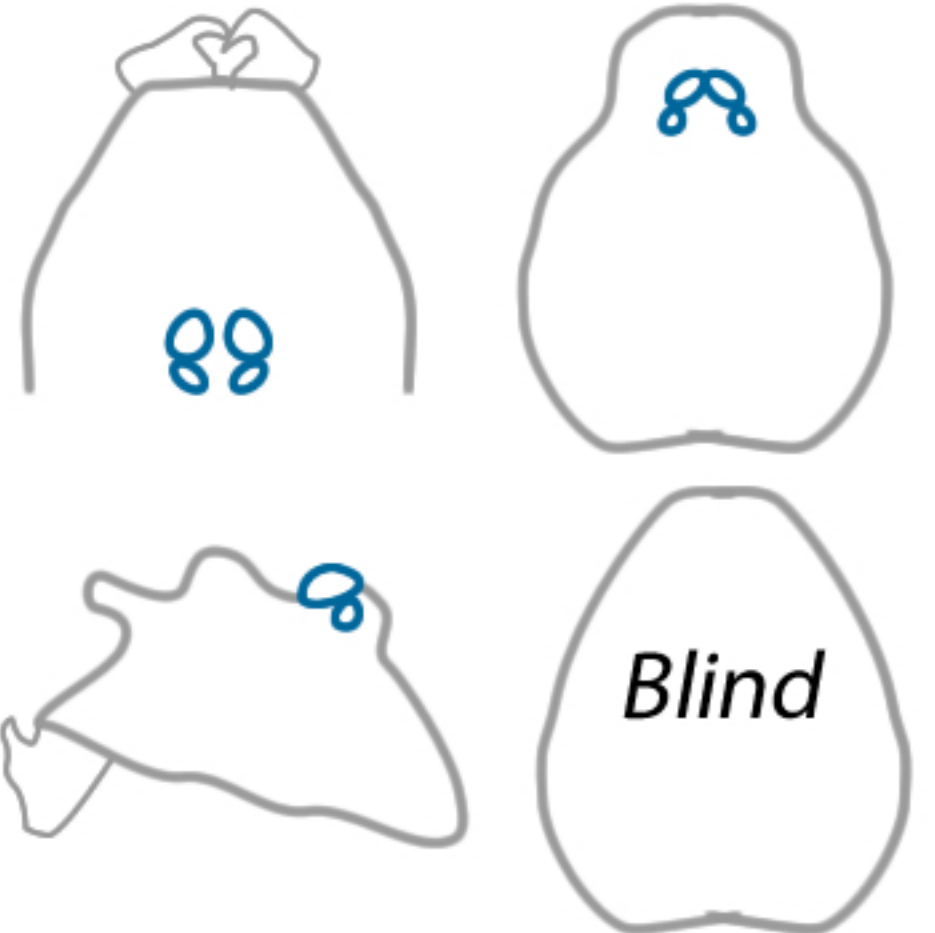
Baiami tegerarioides
STIPHIIDAE



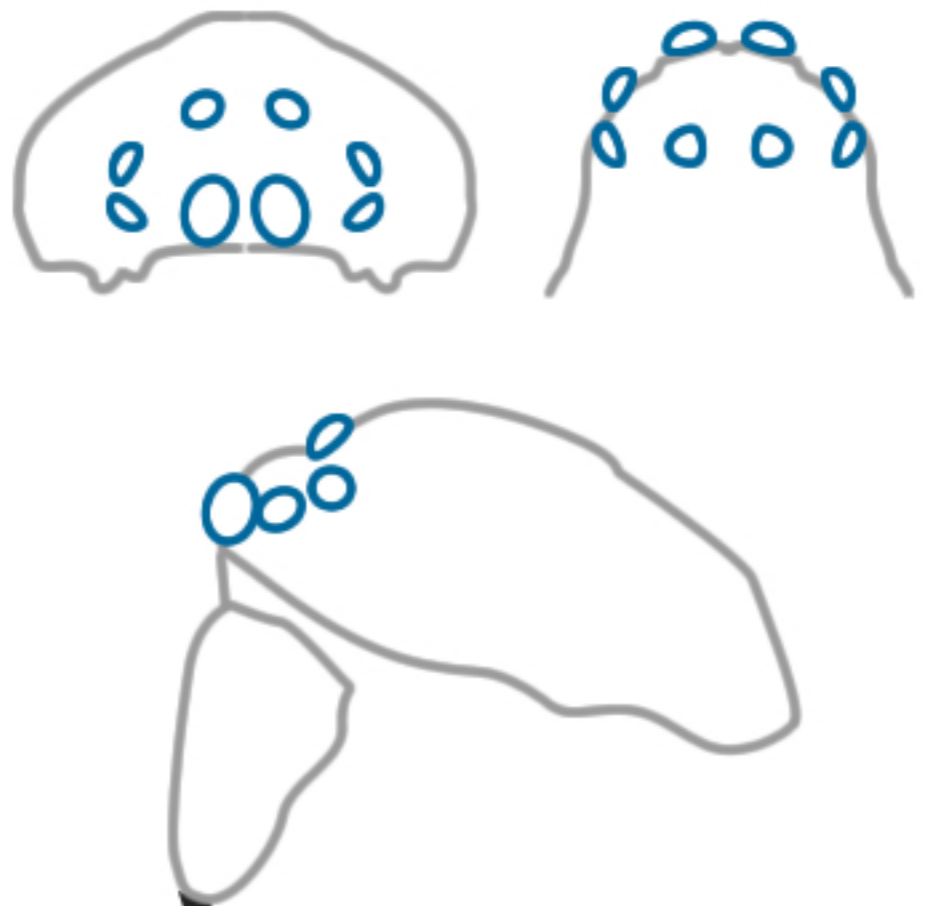
Symphytognatha
SYMPHYTOGNATHIDAE



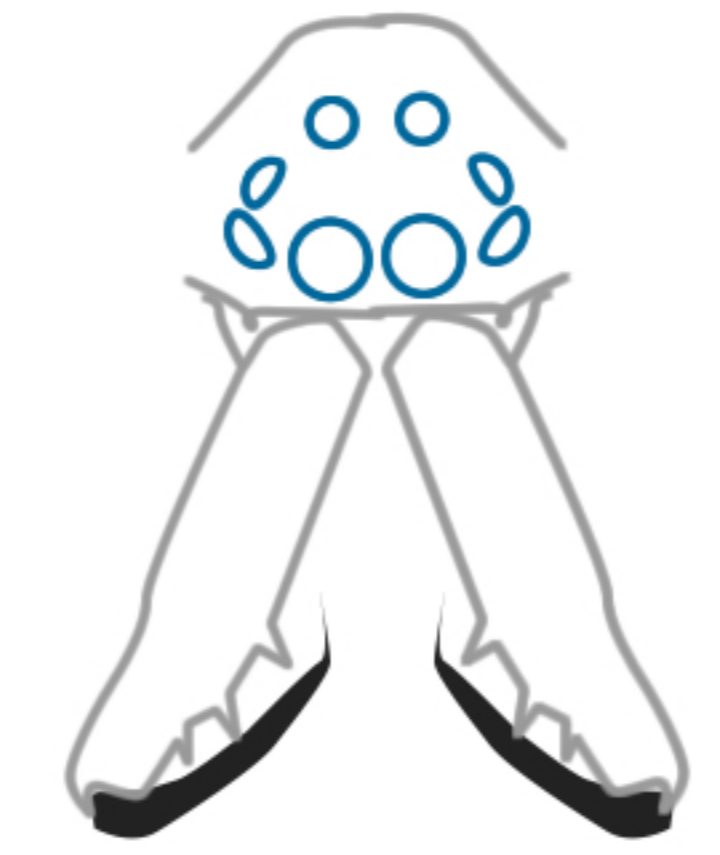
Austratengella
TENGELLIDAE



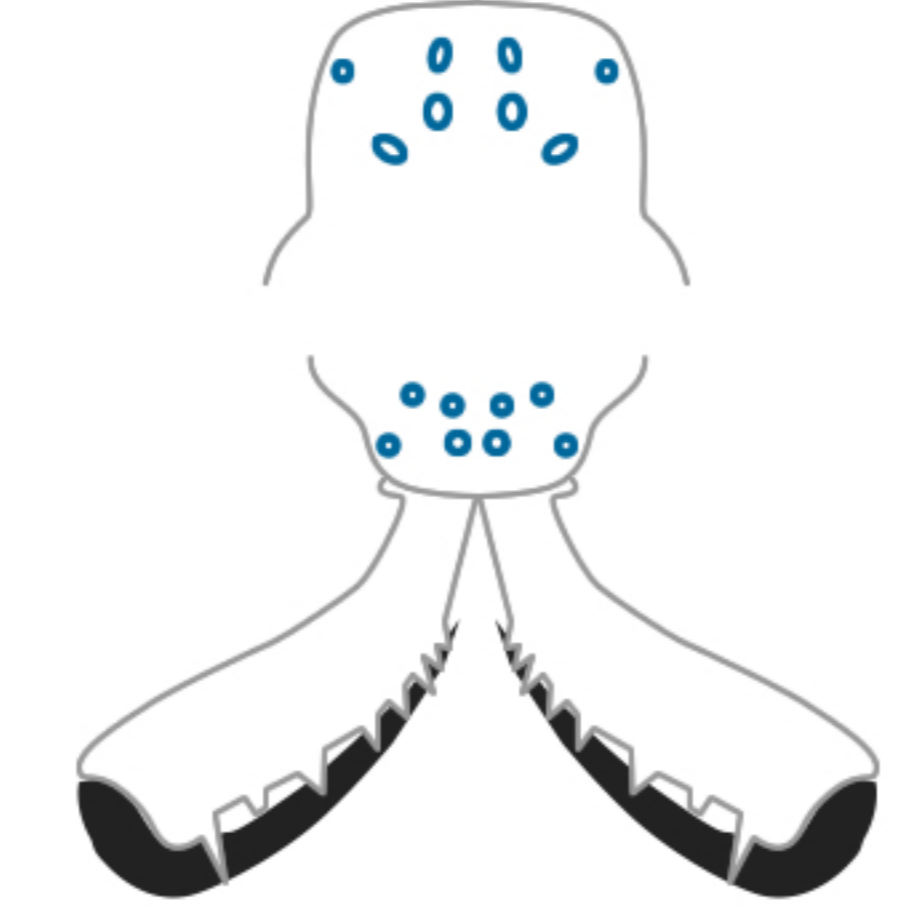
Tetrablemma
TETRABLEMMIDAE



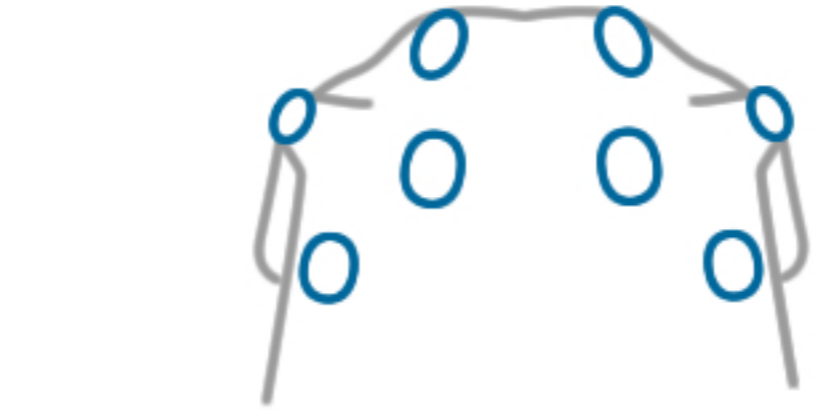
Dolichognatha
TETRAGNATHIDAE



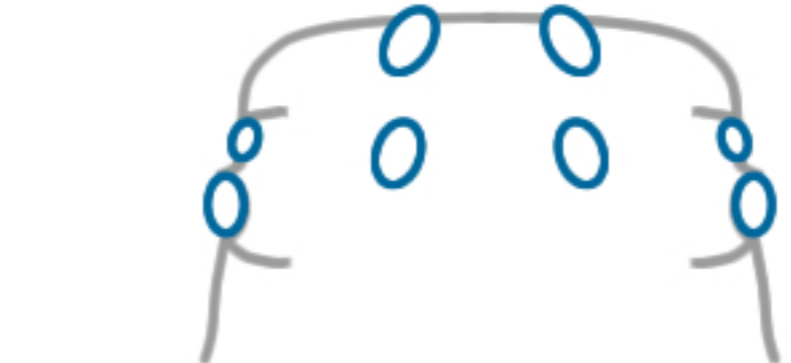
Dolicognatha
TETRAGNATHIDAE



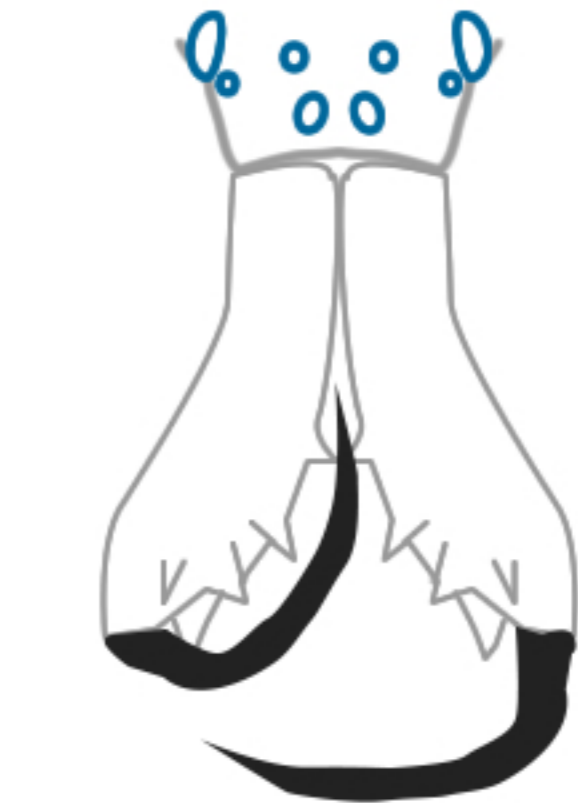
Tetragnatha rubriventris
TETRAGNATHIDAE



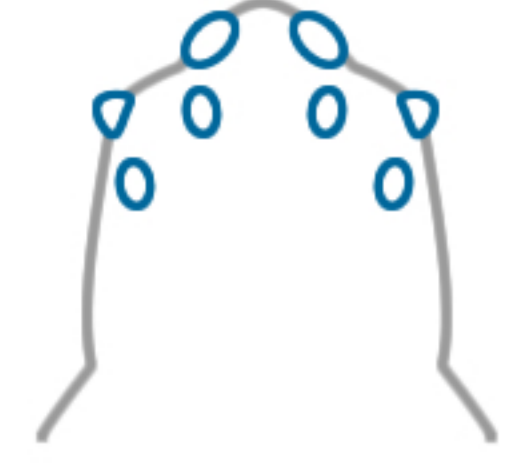
Tetragnatha cyclindrica



Tetragnatha demissa
TETRAGNATHIDAE



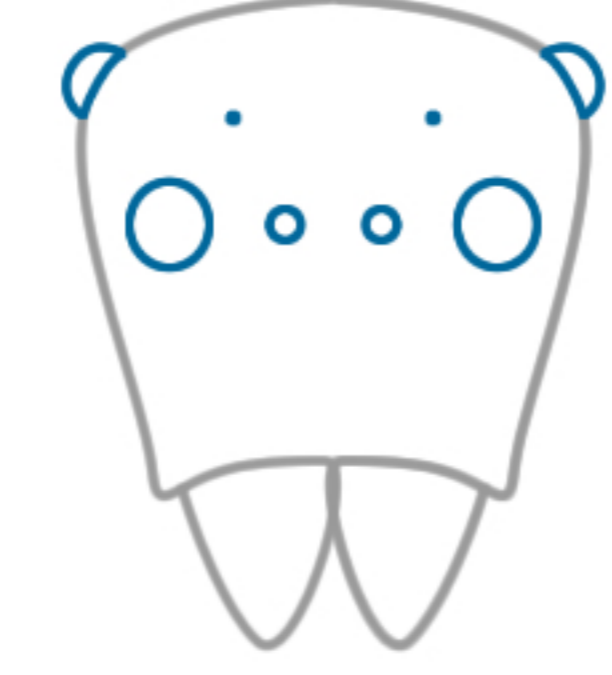
Tetragnatha nitens
TETRAGNATHIDAE



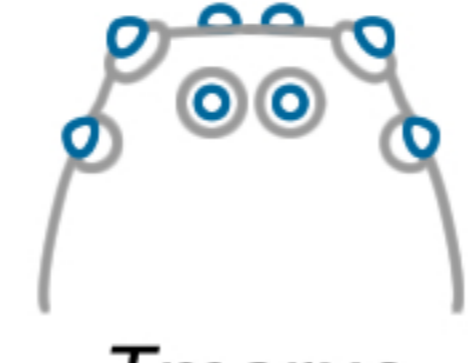
Tetragnatha macilenta



Baalzebub brauni
THERIDIOSOMATIDAE



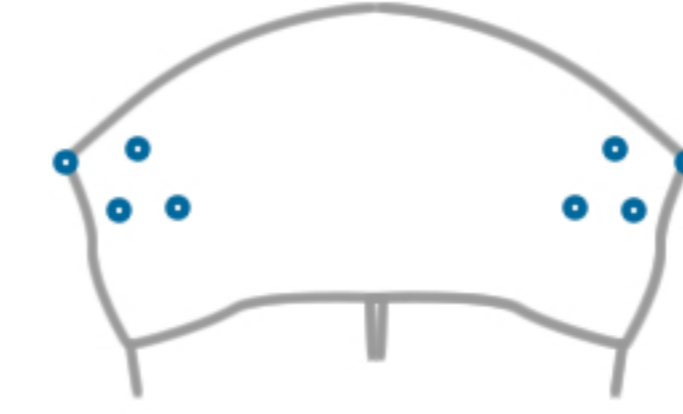
Amyciaea albomaculata
THOMISIDAE



Tmarus



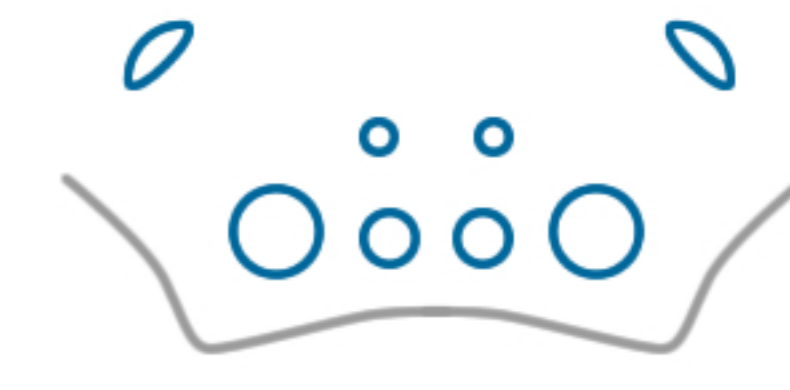
Bomis larvata
THOMISIDAE



Porropis



Cymbacha
THOMISIDAE

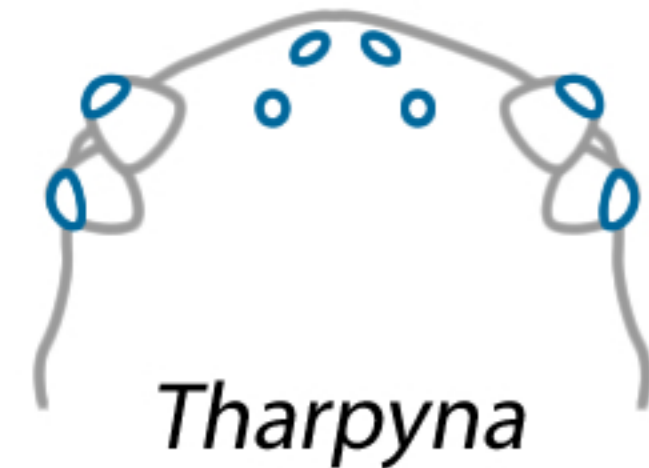


Hedana



Diaea
THOMISIDAE

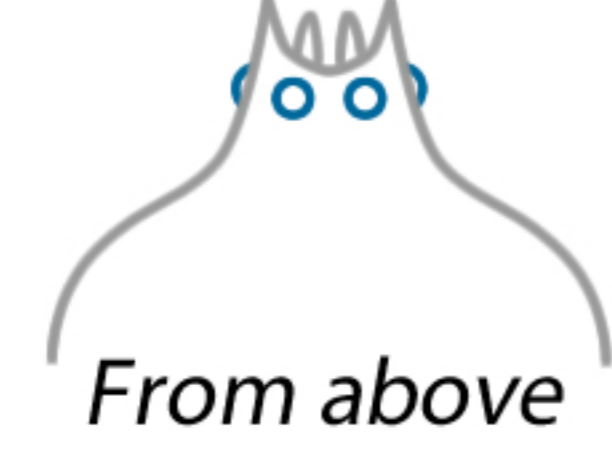
Diaea now
Australomisidia,
Boomerangia, or
Lehtinelagia



Tharpyna

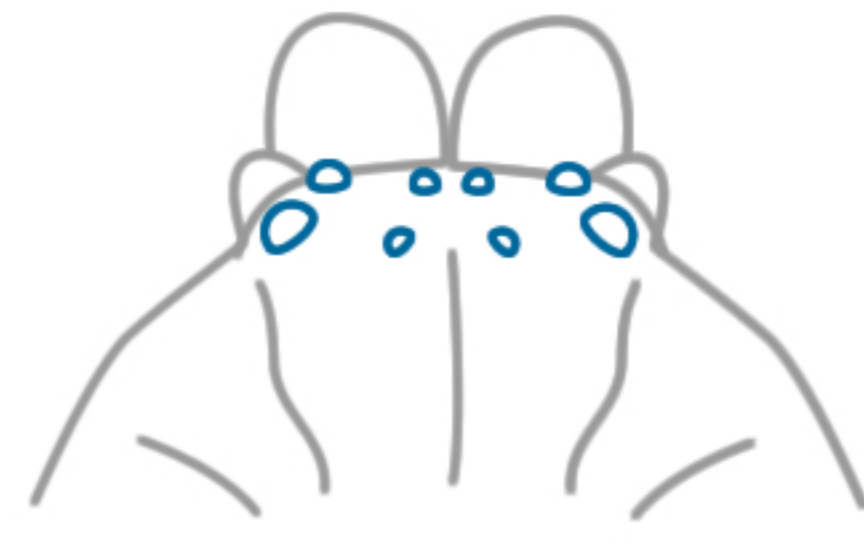


Facing

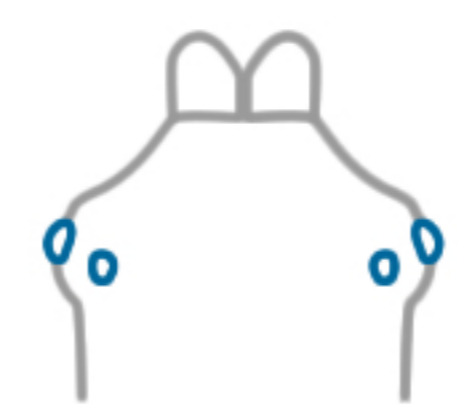


From above

Stephanopis scabra
THOMISIDAE



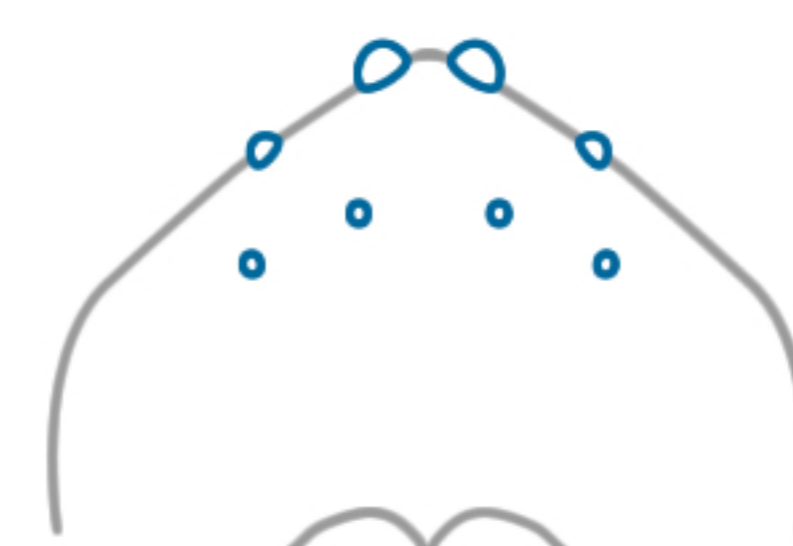
Platorish
TROCHANTERIIDAE



Miagrammopes flavus



Miagrammopes sp.
ULOBORIDAE



Philoponella
ULOBORIDAE



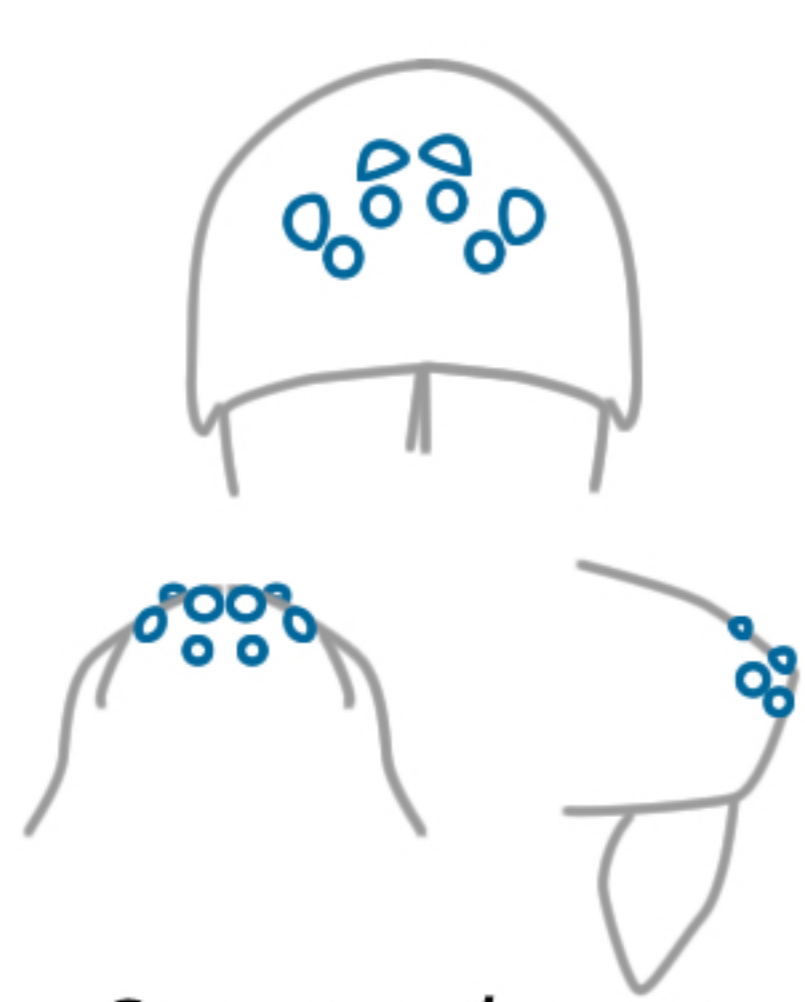
Uloborus
ULOBORIDAE



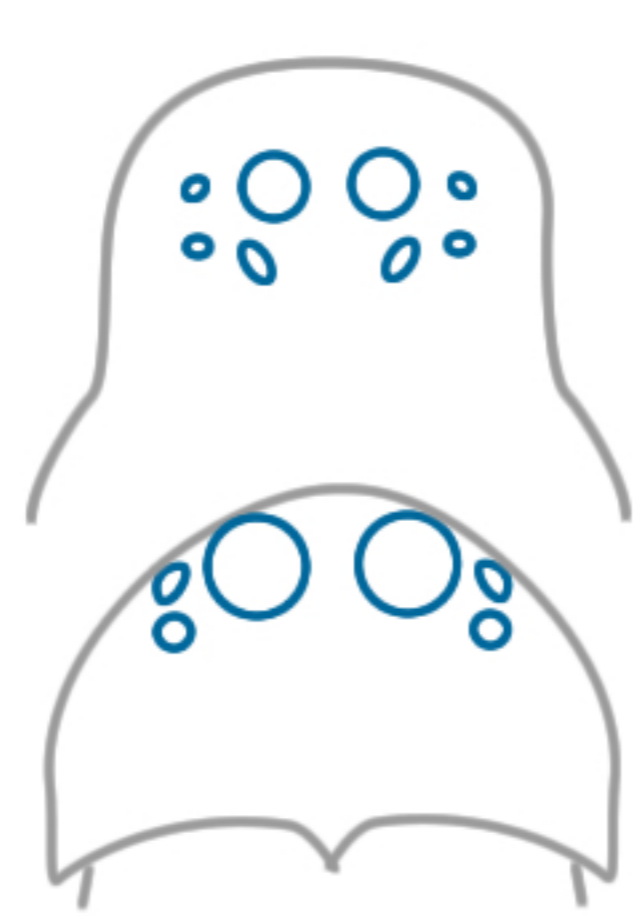
Runcinia
THOMISIDAE



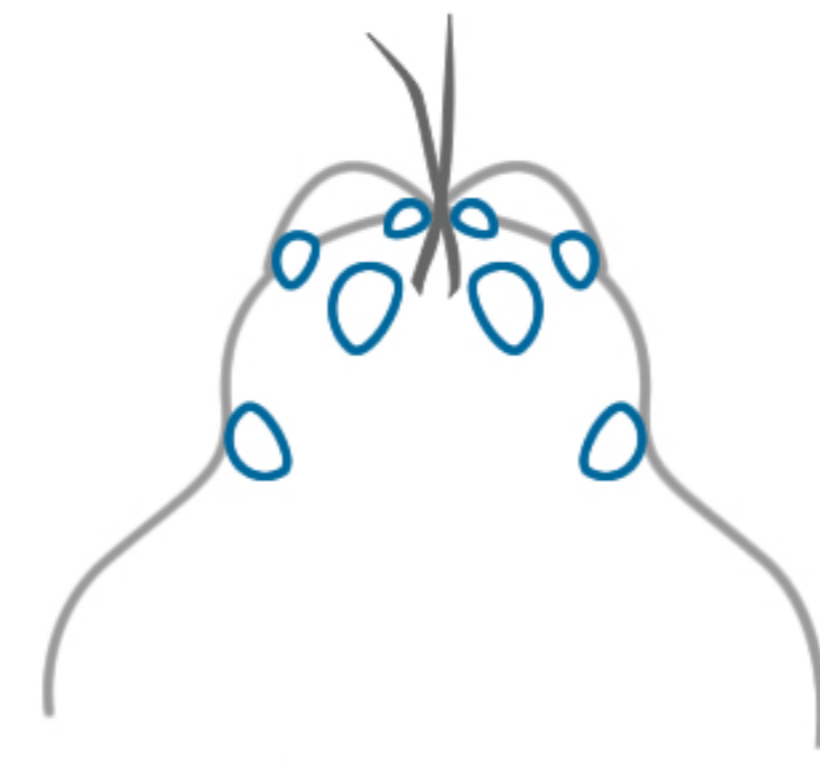
Habronestes pseudoaustraliensis
ZODARIIDAE



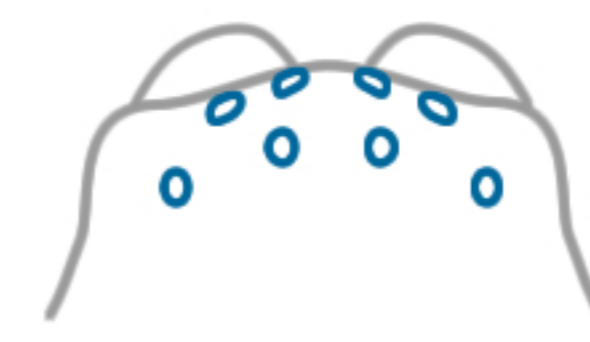
Storosa obscura
ZODARIIDAE



Tropizodium peregrinum
ZODARIIDAE



Thasyraea
MITURGIDAE Zorinae



Megateg elegans



Megateg covacevichae
ZOROPSIDAE

EYE PATTERNS OF
SOME AUSTRALIAN
ARANEOMORPHS

Robert Whyte
rob@toadshow.com.au