

TANGANA, A NEW SPIDER GENUS FROM AUSTRALIA (AMAUROBIOIDEA:
AMPHINECTIDAE: TASMARUBRIINAE)

VALERIE TODD DAVIES

Davies, V.T. 2003 06 30: *Tangana*, a new spider genus from Australia (Amaurobioidea: Amphinectidae: Tasmarrubriinae). *Memoirs of the Queensland Museum* 49(1): 251-259. Brisbane. ISSN 0079-8835.

Six species of *Tangana* gen. nov. are described. They are *T. greeni* (type species), *T. collina*, *T. mcpartlan*, *T. acuta* and *T. clarkei* all from Tasmania, the island state off the southeast coast of Australia and *T. harveyi* from Victoria, mainland Australia. They are placed with *Tasmarrubrius* and *Tasmabrochus* in the subfamily Tasmarrubriinae. □ *Amaurobioidea*, *Amphinectidae*, *Tangana*, new genus, Australia.

Valerie Todd Davies, Queensland Museum, PO Box 3300 South Brisbane 4101, Australia;
9 May 2003.

The Tasmarrubriinae was diagnosed and described by Davies (2002). Like the other genera, *Tangana* spp. are large (8.0 or longer) cribellates found in small retreats under logs or rocks. Some species were sympatric, even found in the same pitfall sample. The only modification from the description (loc. cit.) concerns the curvature of the eye rows — viewed from above the anterior row is slightly recurved, the posterior row straight to slightly procurved (Fig.1D). It is thought that the broad embolus conveys not only the sperm duct but also the duct carrying the acellular glandular secretion that plugs the female gonopores (Suhm, Thaler & Alberti, 1996).

MATERIAL AND METHODS

All but one of the following taxa were collected from sites in Tasmania, the exception being a single female from Victoria. Much of the material, comprising about 50 vials from Maggs Mt, NW Tasmania was collected by R.H. Green. To avoid repetition in listing these, after the first record the collector's name and locality name are omitted. Pitfalls (PF) were the main trapping method, with some hand-collecting. Notation of spines follows Platnick & Shadab (1975). The left male palp is described and illustrated. Measurements are in millimetres. The epigyna vary little between species thus there is an emphasis on male characters and males only are used in the key.

ABBREVIATIONS. Museums: AM, Australian Museum, Sydney; QM, Queensland Museum, Brisbane; QVM, Queen Victoria Museum, Launceston; SAM, South Australian Museum, Adelaide; TM, Tasmanian Museum and Art Gallery, Hobart; WAM, West Australian Museum, Perth. Morphology: The usual

abbreviations are used for body measurements and eyes. MA, median apophysis; RTA, retrolateral tibial apophysis. Other abbreviations on illustrations are explained in the text or in the legends.

SYSTEMATICS

Tangana gen. nov.

TYPE SPECIES. *T. greeni* sp. nov.

ETYMOLOGY. From the Aboriginal 'tangana', meaning spider in the Tasmanian language.

DIAGNOSIS. Males differ from other tasmarrubriines (*Tasmarrubrius* and *Tasmabrochus*) in lacking a large fixed prolateral tegular apophysis and in having a terminally branched median apophysis. Lateral teeth are present on epigynum. Spines on both male and female tarsi III and IV, smaller than those on other leg segments and not present in other tasmarrubriines.

DESCRIPTION. Large, 3-clawed cribellates with geniculate chelicerae, 2 retromarginal and 2 promarginal cheliceral teeth with an intermediate row of tiny thin denticles. Preening combs on distal metatarsi I (a few tines), II, III and IV. Short thick embolus, small membranous conductor and movable median apophysis. A small tegular bulge may be present between embolic base and median apophysis. Small proximal paracymbium usually present. Palpal tibia with long ridge-like distal retroventral apophysis and an excavated retrolateral apophysis with two or more processes. Epigynum with lateral teeth. Gonopores often blocked with acellular material, insemination ducts heavily sclerotised, large spermathecae.

KEY TO MALE *TANGANA*. SPP.

1. Small membranous tegular apophysis present (Fig. 2C) *greeni*
Small membranous tegular apophysis absent 2
2. Median apophysis trifurcate (with small ventral branch) *acuta*
Median apophysis bifurcate (prolateral and dorsal branches only). 3
3. Retrodorsal branch of RTA rounded (Fig. 3C) *collina*
Retrodorsal branch of RTA pointed. 4
4. Retrolateral branch of RTA with proximal spur (Fig. 4C) *mcpartilan*
Retrolateral branch of RTA without proximal spur *clarkei*

Male of *T. harveyi* is unknown.

***Tangana greeni* sp. nov.**
(Figs 1, 2, 6A; Table 1)

ETYMOLOGY. In honour of Robert H. Green, collector of many Tasmanian spiders.

MATERIAL. HOLOTYPE. ♂, Maggs Mt, NW Tasmania, 41°45'S, 146°12'E, PF, 13 June-19 Sept. 1979, R.H.Green (QVM 13:39937). PARATYPES: Tasmania. 4♀, same data as holotype (QVM 13:39938); 17♂, same data (QVM 13:39939); ♂ (QVM 13:39940); ♂, ♀, same data, 15 Oct. 1979 (QVM 13:7076); ♀, 2♂, juvs, 17 Oct. 1979 (QVM 13:7075); 2♂, 10 Oct. 1979 (QVM 13:7072); ♂, 23 Sept. 1981 (QVM 13:42035); 8♂, ex *Poa* tussock, dry sclerophyll, 14 Oct. 1980 (QVM 13:42081); 2♂, 17 Oct. 1979 (QVM 13:42133); 2♂, ♀, (QVM 13:42137); ♂, 4♀, 14 Nov. 1984 (QVM 13:42238); ♀, 500m from camp, dry sclerophyll, 19 Nov. 1980 (QVM 13:42274); ♂, 26 Nov. 1987 (QVM 13:42427); 2♀, W field station, dry sclerophyll, PF, 8 Oct.-6 Nov. 1979 (QVM 13:42522); ♀, Arm R Camp, wattle, 5 Feb. 1980 (QVM 13:42719); ♀, 26 Nov. 1987 (QVM 13:42723); ♂, 23 Sept. 1985 (QVM 13:42838); 8♂, 26 Nov. 1987 (QVM 13:42842); ♂, ♀, wet sclerophyll, 16 Oct. 1979, Forestry (QVM 13:43635); 14♀, wet sclerophyll, 800m, 14 Oct. 1980 (QVM 13:43638); 42♂, same data (QVM 13:43640); 2♂, 26 Sept. 1989 (QVM 13:43641); 2♂, 7 Sept. 1987, Forestry (QVM 13:43642); 3♂, 500m, 14 Oct. 1980 (QVM 13:43643); ♂, 25 Nov. 1986 (QVM 13:43650); 4♂, ♀, 13 Oct. 1982 (QVM 13:43634); ♀, 25 Nov. 1986 (QVM 13:43652); ♀, 13 Oct. 1982 (QVM 13:43715); 7♂, 10 Oct. 1983 (QVM 13:42600); ♂, Cradle Mt, Pencil Pine Ck, 41°38'S, 145°54', 16 - 24 April 1980, R.H.Green (QVM 13:43655); ♀, Mt Field, 42°41'S, 146°43'E, 200m, under log, 20 May 1996, L.J. Boutin (TM J3312); ♀, ♂, juv., 8km SW Waratah, NW Tasmania, 41°29'S, 145°27'E, 690m, PF, 17 Aug.-3 Dec. 1990, R. Mesibov (QVM 13:23308); ♀, same data, 680m (QVM 13:23315); ♂, 670m (QVM 13:23316); ♂, (QVM 13:23322); ♀, (QVM 13:23323); ♀, Mt Barrow, NE Tasmania, 41°23'S, 147°25'E, 25 Apr. 1971, R.H.Green (QVM 13:42359); ♂, same data (QVM 13:42360); ♂, (QVM 13:42364); 2♂, nr Pioneer, NE Tasmania, 41°03'S, 148°01'E, Forestry (TM J3313); ♀, NE Tasmania, *Nothofagus* forest nr Weldborough, 41°12'S, 147°54'E, Aug. 1993, P. Cranston,

J. Trueman (QM S55289); 2♂, 8km SW Waratah, NW Tasmania, 41°29'S, 145°27'E, 680m, 20 Sept. 1990, R. Mesibov (QVM 13:43654); ♂ Black Bog Ck, 870m, 8 July 1997, R. Mesibov (QVM 13:43656); ♂, same data, 830m (QVM 13:43657); ♂, Central Plateau, Butlers Rd nr Tarraleah, 700m, 20 Oct. 1992, R. Brereton (QVM 13:43658); ♂, same data, 18 Aug. 1992 (QVM 13:43659); ♂, Central Plateau, Homes Dam nr Tarraleah, 750m, 1992 (QVM 13:43694). OTHER MATERIAL: ♂, Maatsuyker I., S Tasmania, 43°39'S, 146°16'E, Site 3, 10-22 Dec. 1996, S.J. Cronin (QVM 13:23836).

DIAGNOSIS. Median apophysis trifurcate distally with spur-like prolateral, long dorsal (largely obscured by trunk) and very short retrolateral branches. Small membranous tegular projection (apophysis) at retrolateral base of embolus. Palpal tibia with long blunt ridge-like distal retroventral apophysis; excavated retrolateral apophysis with long digitiform retrolateral and curved retrodorsal apophyses. The latter with a flat rounded centro-retrolateral projection (Figs 1C, 2D) connected by a low ridge to the retrodorsal apophysis.

DESCRIPTION. *Male*. CL 6.1, CW 4.8, AL 5.8, AW 3.5. Light brown cephalothorax, almost glabrous. Dorsal abdomen pale with six dark chevrons with pairs of light spots between them. Pale venter. From above posterior row of eyes straight, anterior row slightly recurved. AME smallest Ratio of AME: ALE: PME: PLE is 7:12:10:11. Chelicerae slightly geniculate, two retromarginal and two promarginal teeth, intermediate row of tiny thin denticles (Fig. 2A,B). Labium as wide as long. Sternum a little longer than wide, 1:0.9. Legs 4123 (Table 1). Notation of spines. Femora: I, D111, P012, R111; II, D111, P111, R011; III, D111, P101, R011; IV, D110, P010, R001. Tibiae: I, P111, V221, R001; II, P111, V222, R001; III, D011, P111, V222, R111; IV, D001, P111, V222, R111. Metatarsi: I, P001, V222, R001; II, D010, P111, V221, R011; III, D101, P111, V221, R111; IV, D110, P112, V221, R112. Tarsi: III, P011, R011; IV, P011, R010.

TABLE 1: *T. greeni* ♂ (♀) leg lengths.

	Leg I	Leg II	Leg III	Leg IV
Femur	6.3 (5.4)	6.0 (4.7)	5.6 (4.5)	6.4 (5.8)
Patella & Tibia	8.1 (6.8)	7.2 (6.2)	6.7 (5.4)	8.1 (6.8)
Metatarsus	5.8 (4.4)	5.6 (4.3)	5.8 (4.2)	8.2 (6.1)
Tarsus	3.9 (2.8)	3.6 (2.6)	3.1 (2.1)	3.5 (2.6)
Total	24.1 (19.4)	22.4 (17.8)	21.2 (16.2)	26.2 (21.3)

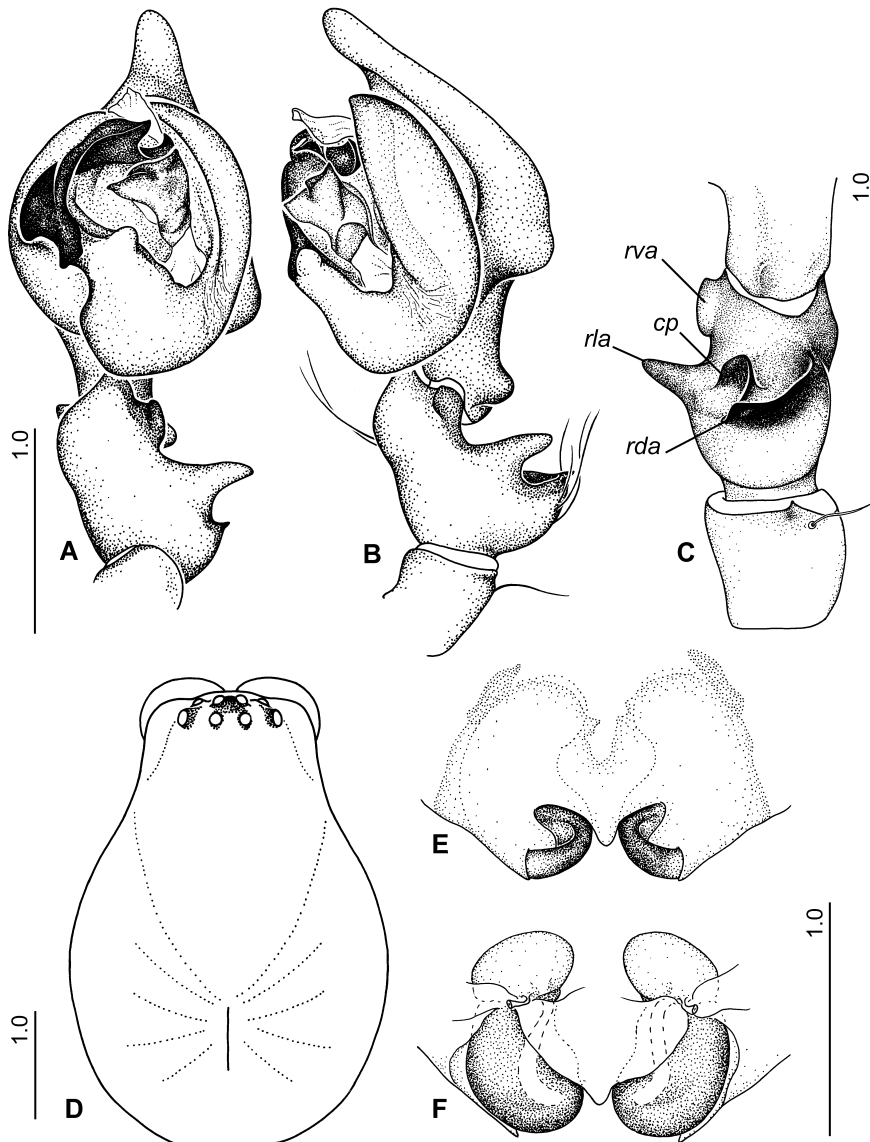


FIG. 1. A-F, *Tangana greeni* sp. nov. A-C, ♂ palp (ventral, retrolateral, dorsal); D, dorsal carapace; E-F, epigynum (ventral, dorsal). cp = central process of RTA; rda = retrodorsal apophysis; rla = retrolateral apophysis; rva = retroventral apophysis of tibia.

♂ palp (Figs 1A-C, 2C,D). Cymbium with bulge on retrolateral edge, narrow neck region with small rounded proximal projection (paracymbium). Thick embolus, small membranous conductor, short terminally trifurcate median apophysis and small blunt membranous tegular projection prolateral to it. Tibia with distal retroventral apophysis and excavated retrolateral

apophysis consisting of digitiform retrolateral process and curved retrodorsal apophysis. The latter with a rounded central process connected by a low ridge to the blunt retrodorsal apophysis.

Males varied in length from 9.2 - 11.5.

Female. CL 5.8, CW 4.0, AL 5.3, AW 3.4. Similar pattern to male. Ratio of AME: ALE: PME: PLE is 7:10:9:10. Legs 4123 (Table1). Notation of

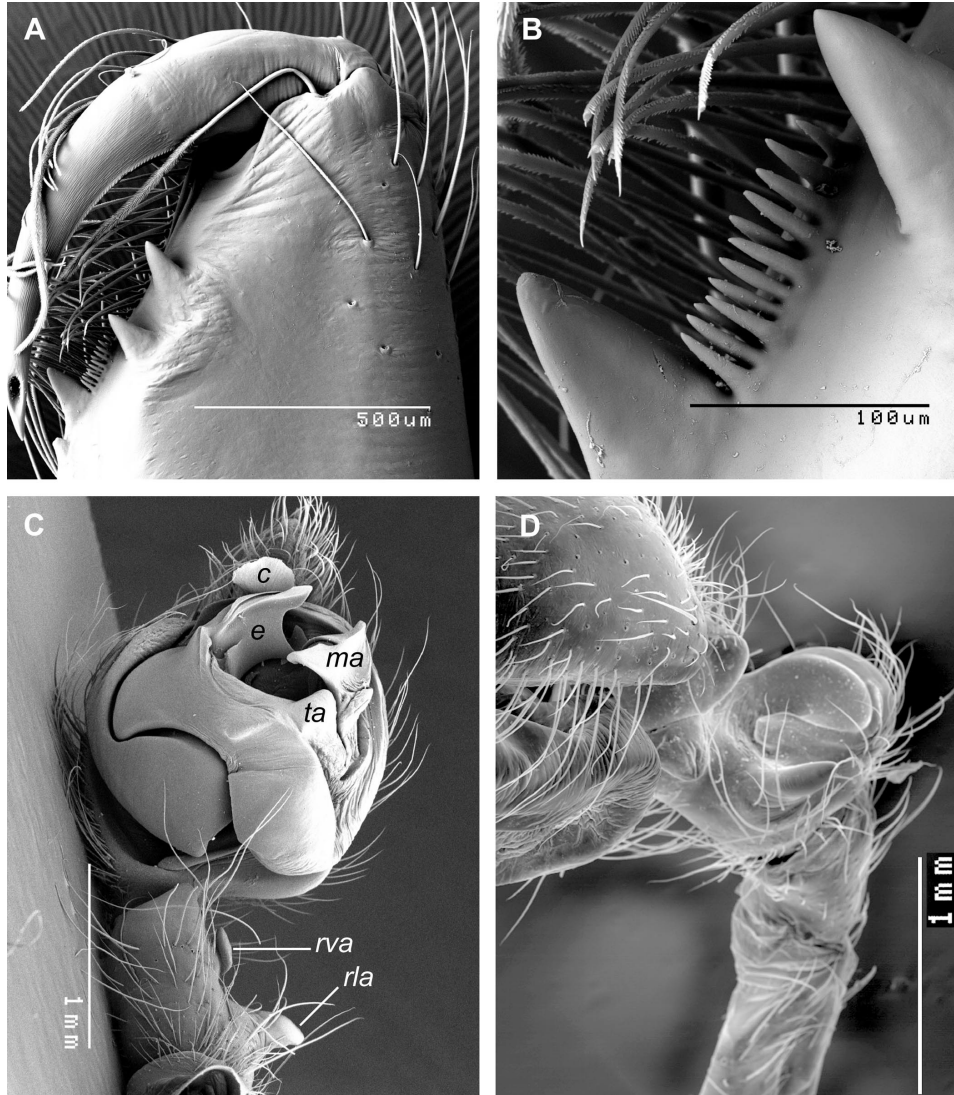


FIG. 2. A-D, *Tangana greeni* sp. nov. A,B, chelicera; C,D, ♂ palp (ventral, retrolateral). c = conductor; e = embolus; ma = median apophysis; rla = retrolateral apophysis of RTA; rva = retroventral apophysis; ta = tegular apophysis.

spines. Femora: I, D110, P011, R011; II, D111, P111, R001; III, D111, P101, R011; IV, D111, P101, R001. Tibiae: I, P111, V222; II, P011, V222; III, D101, P111, V222, R111; IV, D111, P111, V222, R111. Metatarsi: I, P011, V221, R011; II, P111, V221, R111; III, D100, P111, V221, R111; IV, D110, P112, V221, R112. Tarsi: III, P010, R010; IV, P010, R011.

Epigynum (Fig. 1E,F) about a fifth the length of venter. Postero-lateral gonopores leading

through heavily sclerotised insemination ducts to spermathecae thence by fertilisation ducts to uterus. Irregular shaped plugs in some gonopores.

Females varied in length from 9.0 - 14.0.

DISTRIBUTION (Fig. 6A). Found over a wide area in NW Tasmania and Central Highlands region and to a lesser extent in NE Tasmania. One male from Maatsuyker I., in the south, is not listed as a paratype.

Tangana collina sp. nov.
(Figs 3A-E, 6B)

ETYMOLOGY. From Latin 'collis', high ground.

MATERIAL. HOLOTYPE. ♂, Maggs Mt, NW Tasmania, 41°45'S, 146°12'E, PF, 13 June-19 Sept. 1979, R.H. Green (QVM 13:39941). PARATYPES: Tasmania. ♀, same data as holotype (QVM 13:39942); 8♂, same data (QVM 13:39943); ♂, ♀, 7 Nov. 1987 (QVM 13:42722); 2♂, 26 Nov. 1987 (QVM 13:42843); 2♂, 20 Sept. 1988 (QVM 13:43636); ♂, 18 Sept. 1984 (QVM 13:43637); ♀, 14 Nov. 1984 (QVM 13:43644); ♀, 23 Feb. 1988 (QVM 13:43645); ♀, 4 Feb. 1980 (QVM 13:43647); ♀, 22 Feb. 1983 (QVM 13:43648); 2♀, 9 Feb. 1982 (QVM 13:43651); ♀, 11 Feb. 1987 (QVM 13:43691); ♀, 25 Nov. 1986 (QVM 13:43692); ♂, 15 June 1984 (QVM 13:43693); 9♂, ♀, 14 Oct. 1980 (QVM 13:39944); ♂, 23 Sept. 1981 (QVM 13:39945); ♂, 10 Oct. 1983 (QVM 13:39946); ♂, Maggs Mt, Arm R., Camp, wattle, 7 Sept. 1987, Forestry, (QVM 13:39947); 2♂, Cradle Mountain, Pencil Pine Creek, 41°38'S, 145°54'E, 16-24 Apr. 1980, R.H. Green (QVM 13:39948); ♀, Upper Natone Forest Reserve, 41°14'S, 145°53'E, under log, 6 June 1989, J.L. Robinson (TM J2825); ♀, along Obsidian Ck, Savage R., W Tasmania, 41°35'S, 145°08'E, 6 Aug. 1974, R. Mesibov (TM J102).

DIAGNOSIS. A larger spider than *T. greeni*. ♂ palp with flange-shaped paracymbium (Fig. 3B). MA terminally bifurcate, lacking the retrolateral branch. Without tegular projection. Palpal tibia with ridge-like retroventral apophysis, excavated RTA with a rounded retrolateral and curved retrodorsal branch, lacking the central process. Gonopores slit-like.

DESCRIPTION. *Male*. CL 7.3, CW 5.3, AL 6.7, AW 3.7. Similar colour and pattern to *D. greeni*. Ratio of AME: ALE: PME: PLE is 9:12:12:14. Legs 4123. I, 26.3; II, 24.0; III, 22.7; IV, 29.9. Notation of spines. Femora: I, D111, P011, R011; II, D111, P111, R011; III, D111, P111, R021; IV, D111, P101, R011. Tibiae: I, P111, V222, R111; II, P111, V 222, R111; III, D111, P111, V222, R111; IV, D111, P111, V222, R111. Metatarsi: I, P111, V221, R011; II, P011, V 221, R111; III, D110, P112, V 221, R 112; IV, D110, P112, V 221, R112. Tarsi: III, P010, R 010; IV, P001, R011.

♂ palp (Fig. 3A-C). Cymbium with bulge on retrolateral edge, narrow neck region and proximal paracymbium. Thick embolus, membranous conductor, bifurcate MA with prolateral and dorsal branches only. Tibia with blunt retroventral apophysis, excavated RTA with rounded retrolateral and curved retrodorsal branches.

Males varied in length from 11.4 - 14.0.

Female. CL 7.9, CW 5.5, AL 8.8, AW 5.4. Ratio of AME: ALE: PME: PLE is 9:12:11:12. Legs 4123. I, 23.3; II, 20.6; III, 20.4; IV, 26.4. Notation of spines. Femora: I, D111, P001, R011; II, D111, P111, R011; III, D111, R012; IV, D111, P011, R011. Tibiae: I, P111, V 222; II, P111, V 222; III, D111, P111, V222, R111; IV, D111, P111, V222, R111. Metatarsi: I, P011, V221, R011; II, P111, V221, R011; III, D100, P111, V221, R111; IV, D110, P112, V221, R112. Tarsi: III, P011, R011; IV, P011, R011.

Epigynum (Fig. 3D,E) about an eighth the length of venter. Slit-like gonopores.

Females ranged in length from 13.5 - 20.0.

DISTRIBUTION (Fig. 6B). Sympatric with *T. greeni* at Maggs Mt, NW Tasmania and found further west.

Tangana mcpartlan sp. nov.
(Figs 4A-E, 6B)

ETYMOLOGY. From the type locality, McPartlan Pass, SW Tasmania.

MATERIAL. HOLOTYPE: ♂, McPartlan Pass, SW Tasmania, 42°51'S, 146°11'E, 200m, PF, Mar. 1999, M. Driessen (QM S55290). PARATYPES: Tasmania. ♀, same data as holotype (QM S55291); ♀, same data, 12 Mar. 1999 (QM S55292); ♂, same data, 21 Mar. 2001, (QM S55318).

DIAGNOSIS. Large spider. MA bifurcate distally with long prolateral and dorsal branches, lacking retrolateral branch. Tegular projection absent. Palpal tibia with ridge-like retroventral apophysis, excavated RTA with a rounded digitiform retrolateral branch with small proximal process (Fig. 4C); curved retrodorsal branch with flat rounded process curving to dorsal spur.

DESCRIPTION. *Male*. CL 7.1, CW 5.4, AL 6.3, AW 3.8. Red brown cephalothorax. Abdomen brown with six paired pale spots. Labium longer than wide 1: 0.7. Sternum longer than wide 1: 0.9. Ratio of AME: ALE: PME: PLE is 8:9:9:10. Legs 4123; I, 24.5; II, 22.8; III, 22.3; IV, 28.1. Notation of spines. Femora: I, D111, P011, R022; II, D111, P112, R012; III, D111, P111, R021; IV, D111, P111, R011. Patellae: III, D001; IV, D001. Tibiae: I, P111, V222, R111; II, P111, V222, R111. III, D111, P111, V222, R111; IV, D111, P111, V222, R111. Metatarsi: I, D110, P112, V221, R112; II, D111, P112, V221, R112; III, D111, P111, V221, R112; IV, D110, P212, V221, R212. Tarsi: III, P010, R010; IV, P011, R011.

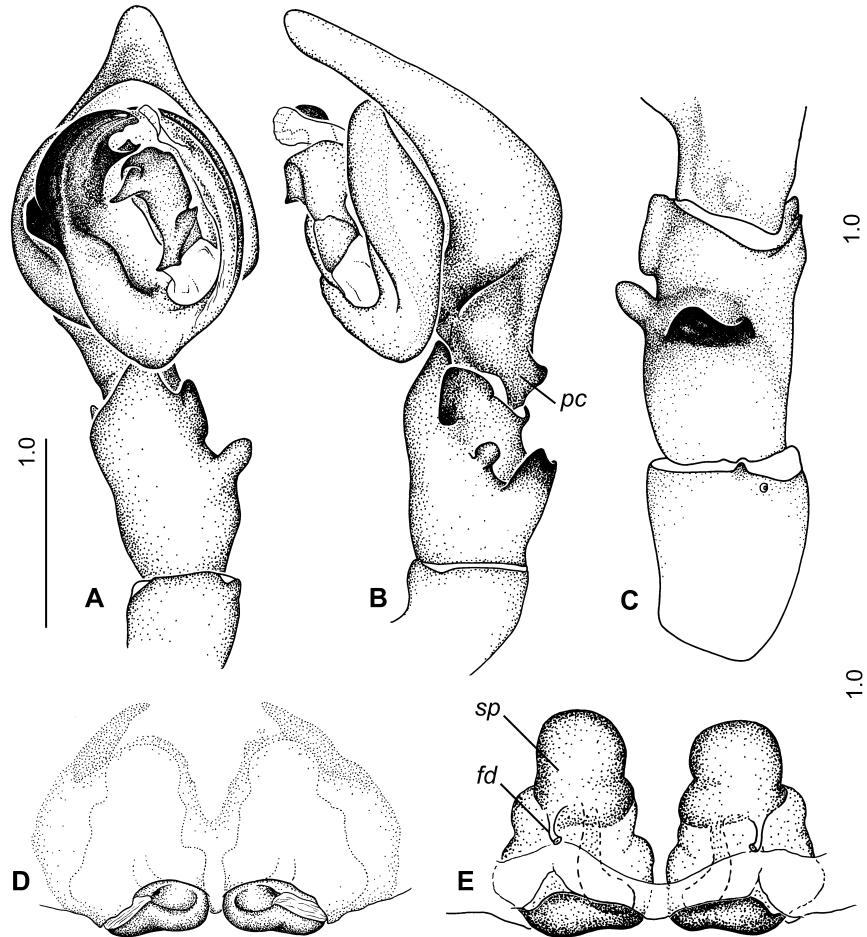


FIG. 3. A-E, *Tangana collina* sp. nov. A-C, ♂ palp (ventral, retrolateral, dorsal); D, E, epigynum (ventral, dorsal). fd = fertilisation duct; pc = paracymbium; sp = spermathecae.

♂ palp (Fig. 4A-C). Cymbium with bulge on retrolateral edge, narrow neck region with small rounded paracymbium. Thick embolus, small membraneous conductor, MA terminally bifurcate. Tibia with ridge-like retroventral apophysis, excavated RTA.

Female. CL 8.1, CW 5.4, AL 7.3, AW 4.5. Coloration similar to male. Ratio of AME: ALE: PME: PLE is 7:9:10:11. Notation of spines. Femora: I, D111, P011, R011; II, D111, P111, R111; III, D111, P111, R111; IV, D111, P111, R011. Patellae: III, D001; IV, D001. Tibiae: I, P011, V222; II, P111, V222; III, D111, P111, V222, R111; IV, D111, P111, V222, R111. Metatarsi: I, P111, V221, R001; II, P012, V221, R012; III, D100, P112, V221, R112; IV, D101,

P112, V221, R112. Tarsi: III, P010, R010; IV, P010, R010.

Epigynum (Fig. 4D, E) about a sixth the length of venter. Curved, pointed lateral teeth.

Other ♀ CL 7.8, CW 5.3, AL 9.7, AW 6.3.

DISTRIBUTION (Fig. 6B). From McPartlan Pass, SW Tasmania.

***Tangana acuta* sp. nov.**
(Figs 5A-C, 6B)

ETYMOLOGY. From the Latin 'acutus', pointed referring to the sharply pointed tip of the embolus.

MATERIAL HOLOTYPE: ♂, nr Pioneer, NE Tasmania, 41°03'S, 148°01'E, PF, Forestry (TM J3314). **PARATYPES**: 2♂, same data as holotype (TM J3315).

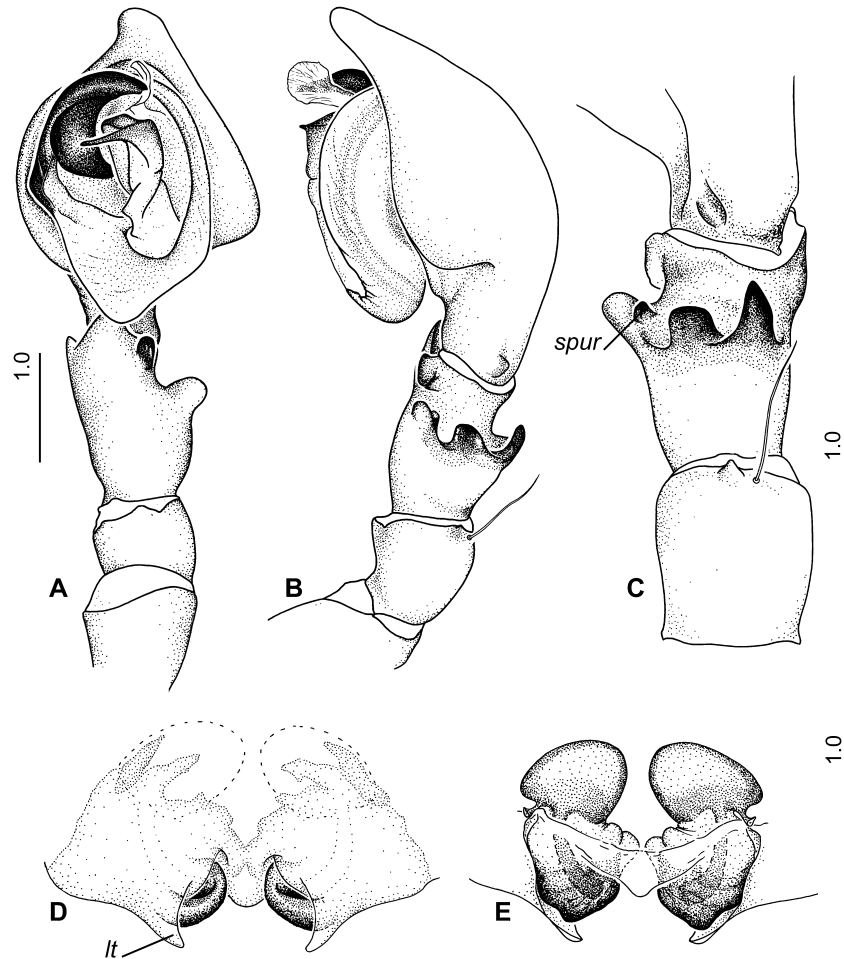


FIG. 4. A-E, *Tangana mcpartlan* sp. nov. A-C, ♂ palp (ventral, retrolateral, dorsal); D,E, epigynum (ventral, dorsal). lt = lateral teeth.

DIAGNOSIS. Smaller spider with flange-shaped paracymbium. Short MA, trifurcate distally. Sclerotised tegular area at base of embolus. Palpal tibia with retrodorsal apophysis terminating in a long sinuous spur (Fig. 5B).

DESCRIPTION. *Male.* CL 5.7, CW 3.7, AL 4.4, AW 2.9. Red brown cephalothorax, pale abdomen. Ratio of AME: ALE: PME: PLE is 7:10:8:11. Legs 4123. I, 20.3; II, 18.3; III, 16.7; IV, 22.9

Notation of spines. Femora: I, D110, P011, R011; II, D111, P012, R011; III, D111, P011, R011; IV, D111, P011, R011. Patellae: III, D001. Tibiae: I, P001, V222; II, P111, V222; III, D111, P111, V222, R111; IV, D111, P111, V222, R111.

Metatarsi: I, P010, V222, R010; II, P011, V221, R011; III, D110, P112, V221, R112; IV, D111, P112, V221, R112. Tarsi: III, R001; IV, R011.

♂ palp (Fig. 5A-C). Small flange-shaped paracymbium. MA trifurcate distally with prolateral, dorsal and small ventral branch. Tibia with distal retroventral apophysis and excavated RTA with long digitiform retrolateral branch, small central process and curved retrodorsal apophysis terminating in long sinuous spur.

Other males were slightly smaller, 8.8 and 9.3.

Female unknown.

DISTRIBUTION (Fig. 6B). Known only from one sample collected near Pioneer, NE Tasmania.

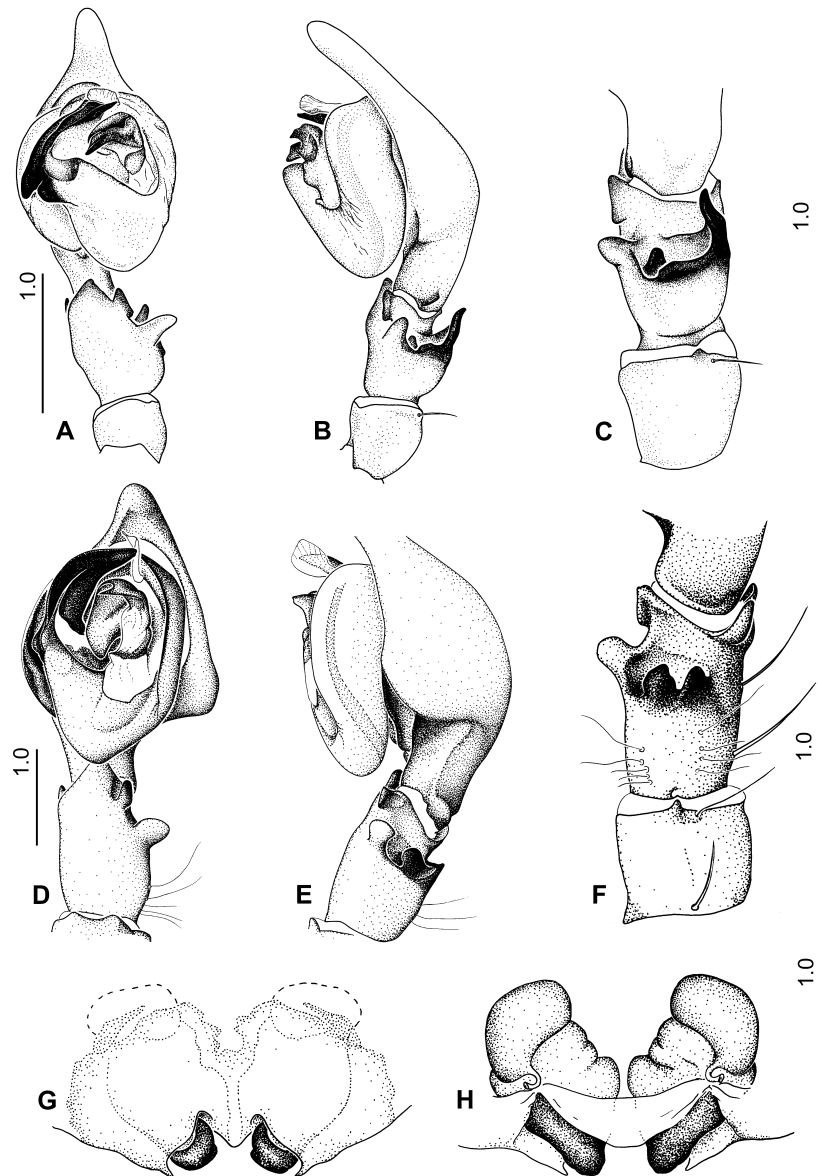


FIG. 5. A-H, *Tangana* spp. nov. A-C, *T. acuta*, ♂ palp (ventral, retrolateral, dorsal). D-F, *T. clarkei*, ♂ palp (ventral, retrolateral, dorsal). G, H, *T. harveyi*, epigynum (ventral, dorsal).

***Tangana clarkei* sp. nov.**
(Figs 5D-F, 6B)

ETYMOLOGY. In honour of Arthur Clarke, speliologist.

MATERIAL. HOLOTYPE: ♂, Exit Cave, 43°29'S, 146°51'E, 7 Mar. 1997, A. Clarke (TM J3259). OTHER MATERIAL: juvenile, same data as holotype (TM J3316).

DIAGNOSIS. Large cave spider with very long legs. MA bifurcate distally. Retrodorsal branch of RTA bluntly pointed.

DESCRIPTION. *Male*. CL 8.7, CW 6.1, AL 7.9, AW 5.5. Coloration similar to other species but without pattern on abdomen. Posterior eye row straight, anterior row slightly recurved. Ratio of

AME: ALE: PME: PLE is 8: 10: 10: 11. Labium longer than wide, 1: 0.8. Sternum longer than wide, 1: 0.8. Legs 4123. I, 30.9; II, 29.3; III, 28.6; IV, 38.3. Notation of spines. Femora: I, D111, P011, R021; II, D111, P102, R011; III, D111, P111, R111; IV, D111, P111, R111. Patellae: III, D001; IV, D001. Tibiae: I, P111, V222, R011; II, P111, V222, R111; III, P111, V222, R111; IV, D111, P011, V222, R111. Metatarsi: I, D010, P111, V221, R112; II, D110, P111, V222, R111; III, D110, P112, V221, R112; IV, D100, P112, V221, R112. Tarsi: III, P001, R001; IV, P001, V003, R001.

♂ palp (Fig. 5D-F). Without paracymbium. MA with large dorsal and small prolateral branches. RTA with short rounded retrolateral and pointed retrodorsal apophyses.

Female unknown.

DISTRIBUTION. (Fig. 6B). Cave spider from SW Tasmania.

***Tangana harveyi* sp. nov.**
(Figs 5G,H, 6A)

ETYMOLOGY. In honour of Mark Harvey, one of the collectors of this spider from Victoria.

MATERIAL. HOLOTYPE. ♀, The Beeches, Victoria, 37°28'S, 145°49'E, 25 Mar.1991, Mark S. Harvey, M.E. Blossfelds (WAM 98/2046). OTHER MATERIAL: 2 juveniles, same data as holotype (WAM 98/2047-8).

DIAGNOSIS. Epigynal spermathecae more widely separated than in other species.

DESCRIPTION. *Female.* CL 7.2, CW 4.8, AL 6.0, AW 4.0 (abdomen shrunken). Red-brown carapace; dark cardinal area and five chevrons with accompanying pale spots on abdomen; pale venter. From above, posterior eye row straight, anterior row slightly recurved. Ratio of AME: ALE: PME: PLE is 8: 11: 9: 12. Labium slightly longer than wide 1: 0.9. Sternum longer than wide 1: 0.8. Legs 4123. I, 21.2; II, 19.7; III, 17.7; IV, 23.2. Notation of spines. Femora: I, D111, P002, R011; II, D111, P111, R100; III, D111, P101, R011; IV, D111, P101, R001. Tibiae: I, P011, V222; II, P111, V222; III, D111, P111, V212, R111; IV, D111, P111, V212, R111. Metatarsi: I, P101, V221, R001; II, P011, V221, R011; III, D110, P112, V221, R112; IV, D110, P112, V221, R112. Tarsi: III, P011, R001; IV, P001, R001.

Epigynum (Fig. 5G,H). Spermathecae more widely separated than in other species.

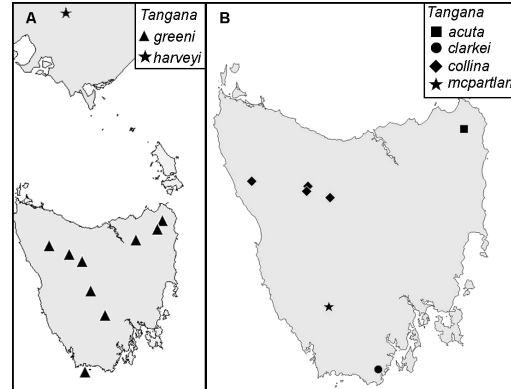


FIG. 6. A,B, Maps showing distribution of *Tangana* spp. in Tasmania and Victoria.

Male unknown.

DISTRIBUTION (Fig. 6A). One female and two juveniles from southern Victoria. This is the first record of a tasmarubriine from mainland Australia.

ACKNOWLEDGEMENTS

I thank the curators and collection managers of the Australian Museum, the Tasmanian Museum and Art Gallery, the Queen Victoria Museum and Art Gallery, the South Australian Museum, and the West Australian Museum for loans of material for this study. I am grateful to the Council of the Australian Biological Resources Study for financial support of illustrators, Catherine Harvey and Christine Lambkin; thanks also to Catherine for her skill in computer graphics. I thank colleague Robert Raven for scanning micrographs and construction of the maps showing distribution.

LITERATURE CITED

- DAVIES, V. TODD 2002. *Tasmabrochus*, a new spider from Tasmania, Australia (Araneae: Amphinectidae: Tasmarubriinae). *Journal of Arachnology* 30: 219-226.
- PLATNICK, N.I. & SHADAB, M.U. 1975. A revision of the spider genus *Gnaphosa* (Araneae: Gnaphosidae) in America. *Bulletin of the American Museum of Natural History* 155: 1-16.
- SUHM, M., THALER, K., & ALBERTI, G. 1996. Glands in the male palpal organ and the origin of the mating plug in *Amaurobius* species (Araneae: Amaurobiidae) *Zoologischer Anzeiger*. 234:191-199.

